

I/N News ... especially for you!

Volume 11, Issue 1
Spring, 2011

Suzi Subeck, Editor
Stan Subeck, President
John Goldstein, Vice President
John Pereles, Secretary
Jeff Miller, Treasurer

Two Level Overcalls ... An Excerpt from Marty Bergen's Pamphlet #9: After Your Opponent Opens

Inside This Issue:

Marty Sez: **Even if you're not vulnerable, don't overcall at the 2 level with a weak 5-card suit.**

Why is that?

2-Level Overcalls

1

It's not easy for others to bid at the two level. If you buy the contract and partner has a singleton – yuck. Partner will be eager to raise you with 3 trumps. Being at the 3+ level with an 8-card fit is not great.

Your RHO opens 1♠. Neither side is vulnerable.

A Major Decision

2

1. ♠ J 3 ♥ A 10 2 ♦ A 10 5 ♣ A J 7 5 3

Double. Let partner decide what suit to play in.

2. ♠ Q J 8 4 ♥ K J ♦ Q 6 5 4 2 ♣ K J

Pass. You have a terrible suit and an ugly hand.

Responder's Rebids

3

If your friends tell you, "All you need for a 2-level overcall is 5 and 10," they are definitely confused.

3. ♠ A J 10 ♥ K J 8 5 4 ♦ A Q ♣ 9 8 6

Bid 1NT. Safer than 2♥ and a lot more descriptive.

The Right Time to Lead a Trump

4

4. ♠ 6 5 ♥ A Q 10 8 4 ♦ K Q 9 8 ♣ 9 5

Bid 2♥. **Having all your strength in your two longest suits is a big plus.**

2-level overcalls on a 5-card suit should include a quality suit (3+ honors).

Help Suit Game Tries

7

Even then, avoid this bid unless you are not vulnerable and have good distribution and a promising hand.

5. ♠ 4 ♥ A 2 ♦ 10 9 8 6 5 3 ♣ A Q 8 6

Bid 2♣. Yes, I'd like a better suit. I'd also like a bigger house. So what! I love 6-4 hands.

Tournament Schedules Throughout

Also worth knowing about 2-level overcalls:

A. When your RHO opens 1♦, a 2♣ overcall may not seem like a big deal. Because the opponents' search for a major must then begin at the two level, overcalling 2♣ over 1♦ can be *very* effective.

Tournament Results

8

B. -200 is a terrible result at matchpoints. It's no big deal at IMPs. So, be reluctant to make a borderline vulnerable 2-level overcall at matchpoints

A Major Decision from Marty Bergen's Pamphlet #11: Opening Leads vs. No Trump

West	North	East	South
Pass	Pass	Pass	1NT
Pass	2♣	Pass	2♠
Pass	3NT	All Pass	

Your Hand: ♠ Q 10 8 7 ♥ Q 10 8 7 ♦ J 5 ♣ J 4 2

With ♦ J 5 and ♣ J 4 2, I'm not leading either minor.

The only choice is: Which major should you lead?

Too many players relish leading their LHO's suit. In fact, leading from strength thru known length usually gives declarer an extra trick by "finessing yourself." Be eager to lead your LHO's suit *only* when:

You have a sequence, OR Declarer is known to be short in the suit, OR Partner requested that you lead the suit.

On this hand, your hearts are poorly placed *in front* of dummy, so you have no chance to develop tricks in that suit. However, your spades are well-placed *behind* declarer, so the correct lead is the ♠7.

		♠ 92	
		♥ AJ54	
		♦ QT43	
		♣ A75	
♠ QT87		♠ K63	
♥ QT87		♥ K63	
♦ J5		♦ 762	
♣ J42		♣ QT63	
		♠ AJ54	
		♥ 92	
		♦ AK98	
		♣ K98	

South has 8 winners.

The ♠7 lead doesn't help him.

If you lead the ♥7, North ducks and East wins his ♥K.

North's ♥AJ behind your ♥QT gives South trick #9.

From the Editor:

In this issue, I am running some articles reprinted from past issues of the **I/N News ... especially for you!** dating as far back as 2001. The material is still current and the lessons are certainly valuable. Since our readership evolves as readers reach 300 points, these lessons are important to review. Hope you enjoy the material as much as our retired readers did.

Other articles are new. Mixing up the material is a good way to keep it all current!!

Overview of Responder's Rebids from Marty Bergen's Pamphlet #10: Responder's Rebids

Overview of Responder's Rebids

1D – 1H

1S – ???

Responder's #1 priority is to tell opener ASAP:

“From my point of view, do we have a game?”

The four possible answers are listed below, along with the points and bids that correspond to them.

Answer	Points	Appropriate Actions
No	5 -7	Pass (with 3-4 spades)
Unlikely	6 -10	1NT 2D 2H 2S
Maybe	11-12	2NT 3C 3D 3H 3S
Yes	13+	3NT 4H 4S 4C 4D (Splinter Bids) 2C (4th-Suit Game Forcing)

Essential Principles for Responder's Rebid

1D – 1H

1S – ???

Principles 1-5 also apply on other 3-suit auctions.

1. Non-jump rebids show weak hands.

The only non-jump that promises a good hand is 2C, which is an artificial bid (4th-Suit Game Forcing).

2. Jumping 1 level shows an invitational hand.

3. Jumps to game show little interest in slam.

4. Double Jumps to both 4C and 4D are Splinter Bids (in support of spades).

5. With all other game-forcing hands, rebid 2C.

If you have slam interest, you must rebid 2C, but rebidding 2C doesn't promise slam interest.

A 2C rebid is often based on a hand where your only goal is to find the best game.

Marty Bergen is a well-known bridge author, teacher and professional player. He has been nominated for the ACBL Hall of Fame more than once. He has several National, Regional and Sectional championships. His educational material is unrivaled. Excerpts featured in our publication are designed to give you perspective on what's available to you ... his products are highly recommended!

The Right Time to Lead a Trump from Marty Bergen's Pamphlet #12: Opening Leads vs. Suit Contracts

The Right Time to Lead a Trump

Every player has heard, "When in doubt, lead trump."

Obviously, if your other suits are "unleadable," you would lead a trump, but the statement above is not very helpful. I much prefer the following guideline:

"The best time to lead trump is when you are NOT in doubt." Here are some situations where a trump lead is indicated:

1. RHO opens a major, his partner never supports him, opener bids a second suit, which becomes trumps. Dummy is probably short in declarer's first suit, so you should be eager to lead a trump.
2. The opponents sacrificed against your game (or slam). Because your side has the balance of power, you (or your partner) doubled. Their only hope to win tricks is with their trumps. Therefore, it's time to, "Get the kiddies off the streets."
3. Your side has strength in all three side suits. Once you remove some of their trumps, what will they do for an encore?
4. Your side opens 1NT, and you're on lead after a 2-suited auction, such as DONT or Cappelletti.

The overcaller has a distributional hand. He wants to do some ruffing, so lead trumps early and often.

5. If partner passes your takeout double of 1♣ or 1♦, he must have a massive holding in opener's suit. Partner would like to draw their trumps ASAP, so unless you are void – lead a trump.
6. Dummy has made a Splinter Bid. A trump lead may stop declarer from ruffing all of his losers in dummy's short suit.
7. The opponents end up in a partscore or game, and partner doubles the final contract. He has great trumps, or a lot of general strength. Lead a trump.

Of these pamphlets:

Larry Cohen said: "Once you see the booklets, you'll refer to them over and over again."

FYI: Updates on my booklets, online lessons, seminars, cruises etc will always be available on my website:
www.martybergen.com

Full compliments of these pamphlets are available from the bridge book sellers at all our tournaments!

Silver Nugget
299er Sectional
February 26 & 27, 2011
Turner Hall
3001 S Stoughton Rd,
Madison, Wisconsin 53716



Saturday February 26
9:00, 1:30, & 7:00
Mini Lessons 15 minutes before game time
3 Sessions of Stratified Open Pairs
3 Session Bracketed Knockouts
Sunday February 27
2 Single Session Stratified Swiss Teams 9:00 and TBA
ACBL members with less than 5 master points play FREE
Chairperson: Jim Mulbrandon (608) 215-5768
Partnership Mulb1108@Yahoo.com

Appleton Sectional, The Wave Ballroom, 2350 N. Casaloma Dr., Appleton, WI

Friday, April 1	1:30 p.m.	Stratified 299er Pairs
	7:00 p.m.	Stratified 299er Pairs
Saturday, April 2	9:00 a.m.	Stratified 299er Pairs
	1:30 p.m.	Stratified 299er Pairs
	7:00 p.m.	Stratified 299er Pairs



Stratification: 299ers: A:200-300 B:100-200 C:0-100

Chairman	Sally Hamm	(920) 725-3619	walhamm@aol.com
Partnerships	Audrey Hansman	(920) 257-4260	ajhans@sbcglobal.net

Tommy Thompson Youth Center/Wisconsin State Fair Park, 640 South 84th Street, West Allis, WI (414) 266 -7000
Sponsored by the Greater Milwaukee Bridge Association ACBL Unit 222



Friday, February 11th
9:30 a.m. 299'er Stratified Pairs
1:30 p.m. 299'er Stratified Pairs (1 Session Event)
Saturday, February 12th
9:30 a.m. 299'er Stratified Pairs
1:30 p.m. 299'er Stratified Pairs
7:00 p.m. 299'er Stratified Pairs
Sunday, February 13th

Bruce
Brown
Memorial
Valentine
Sectional

10:00 a.m. Future Masters Swiss Teams (2 - Session Play Through Event)
Strata for all 299'er events: 0-100/100-200/200-300
Strata for Future Masters Swiss Team: 0-100/100-200/200-300
Strata may be adjusted as attendance warrants

Traditional Hospitality: Home-baked snack treats, fruit, coffee and tea
Food will be available for purchase all three days

ACBL zero tolerance will be enforced

No smoking permitted in the building

ACBL Members with 0-5 master points play free in any event

Partners guaranteed ½ hour before game time for Pair and Swiss team events only

For More Information Contact

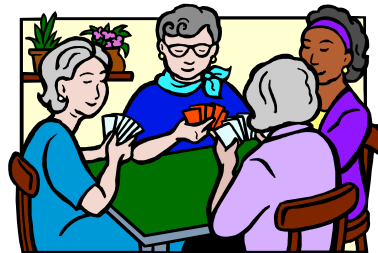
Tournament Chairperson: John Stimson (414) 852-6474 Email: Stayman@wi.rr.com

Partnership Chairperson: Dave Spicuzza (414) 916-0451 Email: Stayman@WI.rr.com

Pewaukee Summer Sectional, A Greater Milwaukee Bridge Association Event, Unit 222
Radisson Pewaukee: N14 W24140 Tower Place, Pewaukee, WI (262)-506-6300.

Friday, July 29th
9:00 AM Stratified I/N (299er) Pairs
1:30 PM Stratified I/N (299er) Pairs

Saturday, July 30st
9:00 AM Stratified I/N (299er) Pairs
1:30 PM Stratified I/N (299er) Pairs



Free Plays for ACBL members with 0-5 points*

Partners guaranteed for all PAIR games if you arrive at least 45 minutes before game time!

Partnerships: Marilyn Charlson 262-646-2246

Tourney Chair: John Stimson 414-852-6474 stayman@wi.rr.com

I/N Chair: Lynette Koski llk220@aol.com

Free!!! Stars of Tomorrow 299ers Silver Point Sectional

Darien Sportsplex, 451 Plainfield Road, Darien, IL
847-764-1060

Be our guest at
this tournament!!

There are
**NO ENTRY
FEES!**

Get a taste of
tournament life
on us!

The CCBA wants
you to test the
waters...

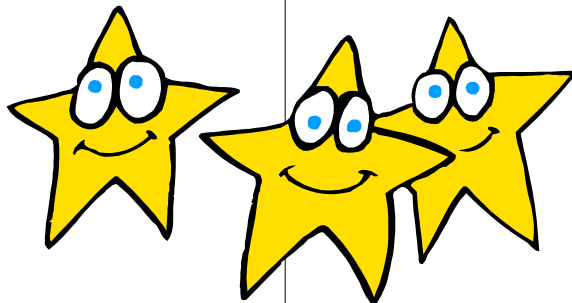
We're betting
you'll like it well
enough to attend
the July Summer
Regional!

Saturday, May 14
9:30 Compact Knockout, Sessions 1 & 2
Stratified 299er Pairs
(0-100, 100-200, 200-300)
Stratified 49er Pairs
(0-5, 5-20, 20-50)

2:00 Compact Knockout, Sessions 3 & 4
Stratified 299er Pairs
(0-100, 100-200, 200-300)
49er Pairs (0-5, 5-20, 20-50)

Sunday, May 15
10:00 Stratified Swiss Teams
(0-100, 100-200, 200-300)
Playthrough

Questions?
Contact Angie Clark at
847-764-1060
or
angieclark@comcast.net
or
www.bridgeinchicago.com



Events or strata may be combined if one has insufficient attendance.

District 13 Spring Regional, April 25-May 1, 2011 Grand Geneva Resort and Spa, Lake Geneva, WI

Intermediate &
Newcomer Events
0-299er Masterpoints

0-5 ACBL members play FREE all week
I/N events... ONLY \$7.00/session!!

Monday: 7:30
299er & 49er Pairs

Tuesday - Saturday
Single Session Games
at 9:30, 2:00, & 7:30
Stratified 299er & 49er Pairs

Sunday: 10:00 & 2:00
0-299er Swiss Teams:
300/200/100/50
2 separate sessions

Lynette Koskie, I/N Chairman

Tournament Chairman: Marilynn Charlson 262-490-2644 email: mcharlson@wi.rr.com



Help Suit Game Try by Lynette Koskie

Help suit game tries are used by opener after an auction begins 1M : 2M. When opener has a good hand that is not quite good enough to rebid 4M, he can make a help suit game try to ask partner to decide whether or not 4M will be a reasonable contract. Opener's rebid of a new suit at the three-level shows weakness (usually three losers) and asks partner to bid either 3M or 4M on the basis of his own holding in that suit. For example:

♠ AKT53
♥ AJT
♦ T32
♣ A8



♠ Q92
♥ KQ
♦ 9854
♣ JT93

<i>Opener</i>	<i>Responder</i>
1♠	2♠
3♦ (1)	3♠ (2)
Pass	

- 1) Help suit game try, asking for help in diamonds
- 2) Signoff; no diamond control

Opener wants to invite game but is worried about his diamond losers, so he bids 3♦. Responder looks at his own holding in diamonds and knows it will be of no use to opener, so he signs off in 3♠.

♠ AKT53
♥ T32
♦ AJT
♣ A8



♠ Q92
♥ KQ
♦ 9854
♣ JT93

<i>Opener</i>	<i>Responder</i>
1♠	2♠
3♥ (1)	4♠ (2)
Pass	

- 1) Help suit game try, asking for help in hearts.
- 2) I can control hearts

In this example, opener's red suits are switched. Consequently, when he bids 3♥ responder is happy to bid game because he has a heart control in the ♥KQ. (Controls do not have to consist of high cards - they can be singletons and voids as well.)

Lynette Koskie is the District 13 Intermediate/Novice Chairman.

She lives in the Milwaukee area and will be providing us with a series of short lessons for this year's issues of the **I/N News**.

Look for Lynette at the District Regional in April (see schedule on page 6). She works closely with Angie Clark from Chicago and Denise Hoffman from WUMBA on the District I/N Programs.

Tournament Results:
Milwaukee Winter Regional, Lake Geneva
December 26-30

Gold Rush Swiss Teams - 6 Tables

MPs	B	C	Names	Score
3.96	1		Milo Grummons, Warrenville IL; Denise Kadleck - Susan Bass - Judy Cohen, Chicago IL	
3.18	2	1	Michael Cochran, Oak Park IL; Brian Werner - Gregory Ward - Layton Kinney, Chicago IL	

Tuesday Afternoon I/N - 4.0 Tables

MPs	A	B	C	Names	Score
1.98	1	1		Dennis Price - Steve Spitzer, Burlington WI	67.36%
1.49	2	2		Robert Margolis - Sherry Margolis, Northbrook IL	59.03%
1.11	3			Sheila Stillman, Highland Park IL; Loretta Wexler, Skokie IL	54.86%
1.05		3		Thomas Krueger, Shorewood WI; Richard Krueger, Milwaukee WI	49.31%

Tuesday AM 299er Pairs - 4.0 Tables

MPs	A	B	Names	Score
1.98	1		Joyce Sirota - Irene Beaudoin, River Forest IL	61.81%
1.49	2		Chris Gardner, Palatine IL; Sherilyn Sorem, Inverness IL	57.64%
1.11	3		Robert Margolis - Sherry Margolis, Northbrook IL	56.25%

Wed Gold Rush Pairs - 24.5 Tables / Based on 22 Tables

MPs	B	C	Names	Score
7.91	1	1	Thomas Krueger, Shorewood WI; Richard Krueger, Milwaukee WI	61.78%
5.93	2	2	Barbara Schuelke, Menomonee Falls WI; Melodee Curtes, Hartford WI	58.55%
4.45	3		Cyann Martin, Neenah WI; Carol Konrad, Neshkoro WI	58.00%
3.34	4		Charlene Whitney, Winnebago IL; Patricia Olafson, Rockford IL	57.36%
2.64	5		Jennifer Musson - Dee Becker, Racine WI	57.14%
2.98	6	3	Gail Salinger, Riverwoods IL; Mady Elman, Highland Park IL	55.86%
2.36	7		Mary Spyers Duran, Shorewood WI; Joanne Behling, Wauwatosa WI	55.09%
2.24	4		Jim Jurik, Oak Forest IL; Ron Blouin, Blue Island IL	53.97%
1.82	5		Harold Wolfram - Roseann Wolfram, Saint Joseph MI	53.69%
2.28	6		William Shunas, Chicago IL; Catherine Westbrook, Winnetka IL	53.59%

FallFest Sectional
November 12-14, Lombard

Fri Morning 299er - 10.5 Tables

MPs	A	B	C	Names	Score
2.12	1	1		Jim Jurik, Oak Forest IL; Ron Blouin, Blue Island IL	65.01%
1.59	2	2		Lois Michaels, Northbrook IL; Ellen Katz, Riverwoods IL	60.30%
1.19	3	3		Sherilyn Sorem, Inverness IL; Chris Gardner, Palatine IL	58.85%
0.89	4	4		Bonnie Boyer, Buffalo Grove IL; Marion Tuttle, Palatine IL	55.92%
0.74	5	5		Richard Cohen, Deerfield IL; Shelley Pilon, Lake Forest IL	54.94%
0.53	6	6		Kandy Ginsburg - Glorya Spero, Highland Park IL	54.73%

Fri Aft 299er Pairs - 14.0 Tables

MPs	A	B	C	Names	Score
2.42	1	1		Peter Rodgers - Conrad DeLatour, Prospect Heights IL	60.61%
1.82	2			Kandy Ginsburg - Glorya Spero, Highland Park IL	58.90%
1.36	3			Sheila Stillman, Highland Park IL; Loretta Wexler, Skokie IL	58.52%
0.90	4/5			Ann Degerstrom - James Degerstrom, Oak Brook IL	57.20%
0.90	4/5			Muriel Fortunato - Sylvia Dunne, Chicago IL	57.20%
0.57	6			Judy D'Isa, La Grange Park IL; Betsy Hoyd, Brookfield IL	56.63%
1.28	2			Charlotte Stein - Harold Stein,	56.44%
0.96	3			Michael Morrice, Crystal Lake IL; Bonnie Katzenstein, Naperville IL	55.30%
0.85	4			Phyllis Zubulake, Lincolnshire IL; Edna MacMillin, Northbrook IL	53.41%
0.64	5			Sherilyn Sorem, Inverness IL; Chris Gardner, Palatine IL	52.08%
0.60	6			Samuel Sirko - Lou Smith, Chicago IL	51.89%

Fri Eve 299er Pairs - 8.0 Tables

MPs	A	B	C	Names	Score
1.82	1			Betsy Hoyd, Brookfield IL; Judy D'Isa, La Grange Park IL	60.00%
1.45	2	1	1	Bonnie King - Keith King, Glen Ellyn IL	55.42%
1.02	3			Sheila Stillman, Highland Park IL; Loretta Wexler, Skokie IL	55.00%
0.84	4/6	2/4		Marshall Hirshman - Marlene Hirshman, Riverwoods IL	54.58%
0.84	4/6	2/4	2/3	Tina Lechnick - W. Jay Lechnick, Glen Ellyn IL	54.58%
0.84	4/6	2/4	2/3	Bonnie Boyer, Buffalo Grove IL; Marion Tuttle, Palatine IL	54.58%

(Continued on page 9)

(Continued from page 8)

0.48 5 4 Harold Stein - Charlotte Stein, Saturday Aft 299er Pairs - 11.5 Tables 51.67%

Table with 5 columns: MPs, A, B, C, Names, Score. Lists participants and scores for Saturday Aft 299er Pairs.

Saturday Eve 299er Pairs - 3.0 Tables

Table with 5 columns: MPs, A, B, Names, Score. Lists participants and scores for Saturday Eve 299er Pairs.

Sunday 299er Swiss Teams - 8 Tables

Table with 5 columns: MPs, A, B, C, Names, Score. Lists participants and scores for Sunday 299er Swiss Teams.

LaCrosse Sectional, November 12-14, LaCrosse

Sat Aft 299er Pairs - 4.0 Tables

Table with 5 columns: MPs, A, B, C, Names, Score. Lists participants and scores for LaCrosse Sectional Sat Aft 299er Pairs.

Madison Sectional, December 3-5, Madison

Fri Mor 299er Pairs - 7.0 Tables

Table with 5 columns: MPs, A, B, C, Names, Score. Lists participants and scores for Madison Sectional Fri Mor 299er Pairs.

Fri Aft 299er Pairs - 6.0 Tables

Table with 5 columns: MPs, A, B, C, Names, Score. Lists participants and scores for Madison Sectional Fri Aft 299er Pairs.

Sat Aft 299er Pairs - 4.0 Tables

Table with 5 columns: MPs, A, B, C, Names, Score. Lists participants and scores for Madison Sectional Sat Aft 299er Pairs.

Three Lakes Sectional, September 17-19, Three Lakes

Fri Aft 299er Pairs - 5.0 Tables

Table with 5 columns: MPs, A, B, C, Names, Score. Lists participants and scores for Three Lakes Sectional Fri Aft 299er Pairs.

Fri Eve 399er Pairs - 6.5 Tables

Table with 5 columns: MPs, A, B, C, Names, Score. Lists participants and scores for Three Lakes Sectional Fri Eve 399er Pairs.

(Continued on page 10)

(Continued from page 9)

1.01	3	3	Nyla Jean Schroeder - Sharon Sanborn, Eagle River WI	56.67%
0.76	4		Mary Freier, Marquette MI; Amelia Butzen, Fond Du Lac WI	55.42%
0.89	5	4	2 Louis Fischer - Mary Fischer, Fond du lac WI	53.75%
0.67		3	Mary Ann Romberg, New London WI; Sandra Oelerich, Appleton WI	48.75%

Sat Mor 399er Pairs - 6.0 Tables

MPs	A	B	C	Names	Score
1.68	1	1		Lee Schultz, Arbor Vitae WI; Carolyn Pfeiffer, Minocqua WI	60.00%
1.26	2	2		Mary Freier, Marquette MI; Amelia Butzen, Fond Du Lac WI	55.33%
1.11	3	3	1	John De Vos - Curtis Parkhurst, Appleton WI	54.58%
0.83	4	4	2	Cindy Hermel - Christie Clark, Wausau WI	52.67%

Sat Eve 299er Pairs - 3.5 Tables

MPs	A	B	Names	Score
1.41	1		Karen Taylor, Eau Claire WI; Jill Bleskacek, Eau Claire WI	64.58%
1.23	2	1	Judyann Terrault, Powers MI; Elizabeth Edwards, Phubbell MI	52.08%
0.92	3	2	Janet Welk - June Goltz, Green Bay WI	50.00%

Sat Aft 299er Pairs - 7.0 Tables

MPs	A	B	C	Names	Score
1.72	1	1	1	Janet Welk - June Goltz, Green Bay WI	65.42%
1.29	2	2		Elizabeth Owen, Houghton MI; Mary Glasson, Chassell MI	61.25%
0.89	3/4	3/4	2	Sandra Oelerich, Appleton WI; Mary Ann Romberg, New London WI	57.08%
0.85	3/4	3/4		Carolyn Pfeiffer, Minocqua WI; Lee Schultz, Arbor Vitae WI	57.08%
0.59	5/6	5/6	3/4	Louis Fischer - Mary Fischer, Fond du lac WI	55.42%
0.59	5/6	5/6	3/4	Cindy Hermel - Christie Clark, Wausau WI	55.42%

Labor Day Sectional, September 3-6, Skokie

Friday Eve 299er Pairs - 5.5 Tables

MPs	A	B	C	Names	Score
1.61	1	1		R Paul Urbanick, Chicago IL; Iliana Rozemberg, Northbrook IL	67.85%
1.21	2	2		Howard Emmerman - Fern Emmerman, Riverwoods IL	56.25%
1.19	3	3		1Bonnie Katzenstein, Naperville IL; Eliasz Steinberg, Skokie IL	54.76%
0.68	4	4		Patricia Sharp - Louis Sharp, Libertyville IL	54.17%
0.89				2Sandra Karnatz, Mount Prospect IL; Emily Davis, Lake in The Hls IL	52.98%
0.67				3Mark Wilder, Evanston IL; Paul Dynowski, Chicago IL	51.78%

Saturday Eve 299er Pairs - 5.0 Tables

MPs	A	B	C	Names	Score
1.51	1	1		Marilyn Steffan - John Steffan, Wilmette IL	62.00%
1.13	2	2	1	Sylvia Dunne - Michael Radzilowsky, Chicago IL	59.00%
0.85	3	3		Iliana Rozemberg, Northbrook IL; R Paul Urbanick, Chicago IL	57.50%
0.64	4	4		Sheldon Cohen - S Cohen, Northbrook IL	57.00%
0.83		2		Nancy Williams - Paul Dynowski, Chicago IL	49.50%

Sunday Eve 299ers - 3.0 Tables

MPs	A	B	C	Names	Score
1.31	1	1		Judy Freeman - James Williard, Arlington Hts IL	69.00%
0.98	2	2		Elaine Frank - Hubert Frank, Northbrook IL	55.00%

Monday 299er Swiss #1 - 15 Tables

MPs	A	B	C	Names	Score
2.52	1			William Shunas - Leon Teichner, Chicago IL; Ellen Bero, Skokie IL; Catherine Westbrook, Winnetka IL	61.00
2.19	2	1		Howard Shachter - Diane Shachter, Deerfield IL; S Cohen - Sheldon Cohen, Northbrook IL	56.00
1.64	3	2		1Donna Kanski - Joseph McCormack, Libertyville IL; Nancy Bruick - John Bruick, Mundelein IL	53.00
1.23	4	3		Marsha Gentile, Oak Brook IL; Gail Paris - Joyce Sirota - Irene Beaudoin, River Forest IL	49.00
0.92	5	4		Howard Emmerman - Fern Emmerman, Riverwoods IL; Louis Sharp - Patricia Sharp, Libertyville IL	48.00
0.69		5		Holly Rozner, Glencoe IL; Jenny Schwartz - Neal Spero - Gloria Spero, Highland Park IL	43.00
0.96				2/3Michael Cochran, Oak Park IL; Gregory Ward - Matthew Staman - William Buchman, Chicago IL	41.00
0.96				2/3Yvonne Williard, Arlington Hghts IL; James Williard, Arlington Hts IL; Marion Tuttle; Bonnie Boyer	41.00

Monday 299er Swiss #2 - 11 Tables

MPs	A	B	C	Names	Score
2.12	1	1		Howard Emmerman - Fern Emmerman, Riverwoods IL; Louis Sharp - Patricia Sharp, Libertyville IL	48.00
1.59	2	2		1Michael Cochran, Oak Park IL; Gregory Ward - Matthew Staman - William Buchman, Chicago IL	46.00
1.19	3	3		Howard Shachter - Diane Shachter, Deerfield IL; S Cohen - Sheldon Cohen, Northbrook IL	36.00

(Continued on page 11)

(Continued from page 10)

0.96 4 4 2 Robert McDonnell, Palos Heights IL; Ann King, Burr Ridge IL; Peggy Beyer, Hinsdale IL; Marie Burke 35.00

Sat Aft 299er Pairs - 14.0 Tables

MPs	A	B	C	Names	Score
2.42	1	1	1	Janis Morrisroe, Palatine IL; Jane Auster Miller, Barrington IL	67.05%
1.82	2	2		Audrey Rubinstein - Ronna Warshauer, Highland Park IL	59.85%
1.19	3/4	3/4		John Steffan - Marilyn Steffan, Wilmette IL	56.82%
1.19	3/4	3/4		Gail Shaps - Bradley Shaps, Northbrook IL	56.82%
0.77	5	5		Belinda Brock - Robert Brock, Highland Park IL	55.87%
0.57	6	6		Bob Novak - Arlene Novak, Highland Park IL	55.11%
1.09		2		Diane Marus, Brookfield WI; Dennis McCann, Chicago IL	54.92%
0.82		3		Charlotte Stein - Harold Stein,	52.27%
0.61		4		June Howard, Noryhbrook IL; Nancy Liebschutz, Northbrook IL	51.33%
0.48		5		Sandra Karnatz, Mount Prospect IL; Emily Davis, Lake in The Hls IL	50.95%

Milwaukee FallFest, September 24-26, Milwaukee

Friday Morn 299ers - 7.5 Tables

MPs	A	B	C	Names	Score
1.95	1			Christine Balistreri, Mequon WI; Cheryl Lutz, Grafton WI	61.11%
1.46	2			Barbara Schuelke, Menomonee Falls WI; Michael Lattyak, Westchester IL	59.03%
1.43	3	1	1	Jack Shlimovitz - Steven Sapiro, Mequon WI	57.15%
0.94	4/5	2/3	2/3	Mary Fischer - Louis Fischer, Fond du lac WI	54.37%
0.94	4/5	2/3	2/3	Shirley Thieme - Sherma Cornelius, Milwaukee WI	54.37%
0.60		4		Richard Krueger, Milwaukee WI; Thomas Krueger, Shorewood WI	53.57%

Friday Aft 299er Pairs - 7.0 Tables

MPs	A	B	C	Names	Score
1.72	1			Suzanne Haidinger, Wales WI; Monica Ansay, Oconomowoc WI	65.83%
1.29	2			Christine Balistreri, Mequon WI; Cheryl Lutz, Grafton WI	58.75%
1.43	3	1		Stephen Blitz, Fitchburg WI; Amelia Butzen, Fond Du Lac WI	57.50%
0.73	4			Joanne Matchette, Vero Beach FL; Linda Jacobson, Mequon WI	56.67%
0.54	5			Sheila Stillman, Highland Park IL; Loretta Wexler, Skokie IL	55.00%
1.19		2	1	Laina Marsh - Carolee Robel, Oconomowoc WI	53.75%
0.80		3		Evelyn Gerum - Elaine Howell, Racine WI	51.67%
0.89		4	2	Mary Fischer - Louis Fischer, Fond du lac WI	51.25%
0.67		3		Barbara Hammes, Racine WI; Dodie Macvicar, Franksville WI	50.42%

Sat Morn 299er Pairs - 6.0 Tables

MPs	A	B	C	Names	Score
1.41	1/2			Christine Balistreri, Mequon WI; Cheryl Lutz, Grafton WI	60.83%
1.41	1/2	1	1	Lois Smith, Milwaukee WI; Joanne Matchette, Vero Beach FL	60.83%
1.00	3	2	2	Margaret Duggan, Palos Heights IL; Jo Hannan, Orland Park IL	58.33%
0.68	4			Suzanne Haidinger, Wales WI; Sandy Brown, Brookfield WI	52.08%
0.75		3		Stephen Blitz, Fitchburg WI; Amelia Butzen, Fond Du Lac WI	47.92%

Saturday Aft 299er Pairs - 5.0 Tables

MPs	A	B	C	Names	Score
1.51	1			Christine Balistreri, Mequon WI; Cheryl Lutz, Grafton WI	64.00%
1.13	2			Winona Wilson, Thiensville WI; Judith Goetz, Milwaukee WI	60.50%
1.24	3	1	1	Carol Cobus, Brookfield WI; Bea Husting, Waukesha WI	53.50%
0.93	4	2	2	Louis Fischer - Mary Fischer, Fond du lac WI	51.00%

Haywood Sectional, October 14-18, Haywood

Fri Mor 199er Pairs - 5.0 Tables

MPs	A	B	C	Names	Score
1.43	1	1	1	James Louis Postudensek, Tower MN; Norma Postudensek, Duluth MN	62.50%
1.07	2			Diana Jensen, Stillwater MN; Miriam Larson, Minneapolis MN	60.00%
0.95	3	2	2	Maila Kuhn - Kenneth Kuhn, Tomah WI	55.00%
0.63	4/5	3/4		Robert Larson - Barbara Larson, Medford WI	54.50%
0.63	4/5	3/4		Carol Schultz - Ken Schultz, Iron Mountain MI	54.50%

Fri Aft 199er Pairs - 5.0 Tables

MPs	A	B	C	Names	Score
1.43	1			Diana Jensen, Stillwater MN; Miriam Larson, Minneapolis MN	62.50%
0.94	2/3			Dave Drewes - Jeffrey Copsey, La Crosse WI	56.50%
1.27	2/3	1		James Louis Postudensek, Tower MN; Norma Postudensek, Duluth MN	56.50%
1.11	4	2		Gretchen Anderson - Jim Anderson, Rochester MN	51.00%
0.73		3/4	2/3	Richard Estry, Rochester MN; Alan Larson, Rocheiter MN	48.50%
0.73		3/4	2/3	Robert Larson - Barbara Larson, Medford WI	48.50%

(Continued on page 12)

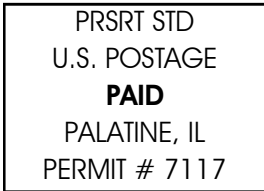
The District 13 I/N Newsletter, Spring, 2011

Suzi Subeck, Editor

Email: stansubeck@prodigy.net

106 Penn Court, Glenview, IL 60026

Voice: 847-509-0311; Fax: 312-220-9114



Upcoming Tournaments (advertised within)

Valentine Sectional, February 11-13, West Allis, WI

Silver Nugget Sectional, February 26-27, Madison, WI

Appleton Sectional, April 1-3, Appleton, WI

Spring Regional, April 25-May 1, Lake Geneva, WI

Stars of Tomorrow, May 7-8, Darien, IL

Pewaukee Sectional, July 29-31, Pewaukee, WI

(Continued from page 11)

Thu Eve 199er Pairs - 4.0 Tables

MPs	A	B	C	Names	Score
1.17		1/2	1/2	Charlene Gundersen, Lacrosse WI; Jerome Gundersen, La Crosse WI	62.50%
1.17		1/2	1/2	Richard Estry, Rochester MN; Alan Larson, Rocheiter MN	62.50%
0.75		3		Ken Schultz - Carol Schultz, Iron Mountain MI	56.94%

Eau Claire Sectional, July 16-18, Eau Claire

Fri Aft 299er Pairs - 4.0 Tables

MPs	A	B	C	Names	Score
1.47	1	1		David McCall - Terese McCall, Eau Claire WI	65.48%
1.10	2	2		Elisabeth Nelson - Robert Nelson, Hudson WI	54.17%
0.83	3			Robert Bodeau - Lois Bodeau, Chippewa Falls WI	52.98%

We are pleased to announce the this year's District 13 Spring Regional will again offer 1/2 price entry fees for all 299er events.

IN players may ask questions or submit stories or requests for publication in this newsletter by emailing the editor, Suzi Subeck, at stansubeck@prodigy.net.

Bridge teachers, also, are invited to submit mini lessons or fun stories for publication to Suzi Subeck, the IN newsletter editor, at stansubeck@prodigy.net.