

# I/N News ... especially for you!

Volume 9, Issue 2  
Fall, 2009

Suzi Subeck, Editor  
Stan Subeck, President  
John Goldstein, Vice President  
Denise Hoffman, Secretary  
Jeff Miller, Treasurer

## Ethics and Etiquette from Jeff Tang's Website

### Inside This Issue:

Ethics and Etiquette 1

Ms. Information 7

Hand Shapes 8

Tournament Results 9

Tournament Schedules Throughout

#### Table Manners:

When dummy lays her hand down, she will usually say, "Good luck, partner." Declarer, upon seeing her hand, will say, "Thank you, partner." In online bridge clubs, you will see these comments shortened to "glp" and "typ." This is just a simple exchange of courtesies intended to maintain partnership harmony. Very serious players dispense with these pleasantries because they prefer focusing 100% at the task at hand, which is OK. If you are into the habit of saying "good luck" and "thank you," though, be sure to do it on every deal, even if you want to strangle partner for his horrendous bidding. Partnerships start breaking down and making more errors when one player decides to be crass and not say "thank you" after his partner lays down an awful dummy. It's also important to not tip the defenders off about your bidding gone awry. If dummy says "good luck" and declarer sighs and shakes his head, the opponents can often make inferences about the deal, and defend better as a result.

At duplicate bridge, it is polite to greet each pair of opponents you face. You are not expected to exchange handshakes and huge grins, but bridge after all is a game and salutations are appropriate. At the end of a round, it is also common for either pair to say "thanks" or "good luck." Only at extremely high-level competitions would you not expect many pleasantries.

During the play of the hand, whether it is regular or Tournament Bridge, talk is usually kept to a minimum. Declarer can call for cards from dummy, and she, along with the defenders, may claim (to win a surefire, specific number of tricks) at any time. Aside from that, players normally do not chat until the hand is finished. Dummy especially should never say anything to assist declarer. The only thing dummy is allowed to do in tournament bridge is to ask partner if she is void when she fails to follow suit. Dummy is NOT allowed to make or suggest a claim.

When a hand is over, you can compliment any player who did something particularly well, either in the bidding or the play. If you are praising partner, be sure not to overdo it because this may be perceived as gloating (particularly if the opposition made a mistake). It is also considered proper manners to refrain from criticizing partner for some wrong action he took. Squabbling after a hand makes the game less fun for everyone at the table. It also delays the play of the next deal.

#### Tempo:

In bridge, players are not allowed to vary the tempo of their bids and plays in an effort to mislead the opponents. Players should try making their bids and plays in an even tempo whenever possible. Of course, there are times when you have to stop and think about what your next action will be. To purposely pause when you have no problem, however, is wrong. This behavior, often referred to as coffehousing, is very much disapproved of in all bridge arenas. It is also considered unethical in many situations to make a very fast bid or play, indicating that you have no problem at all. For instance, your partner opens 1NT, your RHO (right-hand opponent) overcalls 3D (weak), and you take less than a second to pass. Obviously your partner now knows that your hand is broke, and he may be able to use that information to your side's advantage. This is why intentional pauses are used

*(Continued on page 2)*

---

(continued from page 1)

in tournament bridge. After a jump bid is made by a player's RHO, that player is supposed to wait 10 seconds before making a call. We are not saying you must adopt this practice in social bridge, but you should be aware of the times when you should play without pausing, and when you should pause before playing.

There is one suit layout that a new player should be very careful with, and that is when he holds a queen in front of an AJ or KJ tenace in dummy. For example:

Dummy  
KJ543

Novice  
Q82

Declarer leads the six toward dummy. Raw novices will take some time to think about playing the queen in this situation. A more experienced novice, on the other hand, might play the two as fast as he can, to pretend he doesn't have any problem. The raw novice is allowed to stop and think about the play if he is genuinely unsure of what to do; the more experienced novice who 'shotguns' the two is being unethical because he is purposely varying his tempo in an attempt to deceive declarer. To repeat, tempo should never be used to try to mislead one's opponents.

Another suit layout that beginners should watch for is this:

Dummy  
KJ543

Novice  
982

In this diagram we have swapped the nine and the queen. Again declarer leads the six. An unethical player will purposely pause before playing the two, in an attempt to pretend he has the queen. Be careful if you are a beginner and this situation arises. If it does, you are expected to follow suit smoothly. Even a slight break in tempo in a tournament may cause declarer to start screaming for the bridge cops. Whether or not declarer will be overreacting is not the issue. The point is to avoid any chance of a misinterpretation of your intentions.

### **Psychic Bids:**

Psychic bids, psychs, psyches...these are bids made in an attempt to achieve a good score by misleading the opponents into taking losing actions in the bidding and/or play. Usually, a psych is made on a very weak hand in an effort to convince the opponents they have less combined strength than they really do. On rare occasion, though, a player purposely underbids his hand hoping the opponents will overestimate their values, or double him in a later round of bidding.

Psychs are expressly allowed in contract bridge, with two conditions. One, a player cannot use conventional psychs as part of his bidding system; his partner must be totally oblivious to the fact that a psych has been made. Two, a player cannot psych more than once in a blue moon. Excessive psyching is frowned upon in social bridge, and disallowed in tournament play. Not only do psych bids have the tendency to irritate opponents, they can lead to unspoken bidding agreements between the psycher and his partner. For example, if you frequently open 1S with only four spades when your agreement with partner is that you promise five, partner will eventually recognize your tendencies, whereas different opponents never will. Consequently, partner can adjust his bidding accordingly, but opponents will always incorrectly assume you hold five spades. Such understandings between you and partner are unethical.

There are also situations that allow "free psychs" - psychs that pose little or no risk to the psycher. The most common free psych is a non-raise response to a preempt made with a hand containing three- or four-card support. For instance, you hold:

(Continued on page 3)

(continued from page 2)

♠ 987  
♥ 2  
♦ AJ5  
♣ 965432

and the auction begins:

Partner	RHO	You	LHO
2♦*	Pass	?	

\*Weak, showing six diamonds and 5-10 HCP

This is a free psych situation. Chances are you could psych 2♥, 2♠, 2NT, or even 3NT and get away with it. If you get doubled, or if partner raises your suit, you can always run back to diamonds. This is a common and easy psych to make, but it is rather sophomoric and you will rarely, if ever, see experts do it. However, because most players are not experts, you should always be suspicious when you hold a strong hand and hear something like:

LHO	Partner	RHO	You
2♦*	Pass	3NT^	?

\*Weak.

^Supposedly strong and balanced.

You should also be careful if you decide to make these types of free psychs yourself. As we have discussed earlier, frequent psychs will lead to unspoken agreements between a psycher and his partner. It is worth repeating that these types of agreements are forbidden.

Finally, if you decide to make a psych bid, be prepared to do a lot of apologizing to your partner if it blows up in your face. Much of the time, psychs turn out disastrously for the psyching player, and there are few blows to partnership morale heavier than a bad psych.

### **Falsecards:**

A falsecard is a card that is played in attempt to deceive one or more players at the table. **Falsecards are not unethical.** You can falsecard as much as you want, although prudence is invariably the golden rule for success. There are random falsecards novices make which sometimes help the opposition, and there are intelligent falsecards good players make that have a reasonable chance of succeeding. When in doubt, it's better to not falsecard at all. At least that way partner will never be misled into the losing action. Like a bad psych, a bad falsecard will upset him to no end.

The only type of falsecarding that is banned is purposeful falsecarding that a partnership has agreed to use in certain situations. For example, against notrump contracts, a player often leads the fourth-highest card of her longest suit. If she decides to make her opening lead from a suit such as A9753, and she and her partner have agreed to use fourth-highest leads, she would normally lead the 5. What she cannot do is tell her opponents that her side has agreed to fourth-highest leads, but then continually lead, say, her third-highest card. Obviously her partner is going to know what's going on after a while, whereas various declarers will always think her lead is fourth-best. This type of falsecarding is unethical.

### **Cheating:**

Cheating is obviously a serious offense in bridge. In tournament bridge it results in suspension or expulsion. The vast majority of players would never dream of cheating, but there are always a few people with enough loose marbles to try it. And unfortunately there are many ways to cheat. Players have been caught tilting their scoring pencils, tapping each other's feet and exchanging finger signals.

If you strongly suspect foul play in a tournament, you can approach the director after the event and present your evidence. Make sure you understand, however, that accusations and mere suggestions are an extremely serious business. Never accuse someone outright at the table of cheating. Doing so is considered one of the worst possible offenses in bridge. Even to simply imply someone is cheating is to start a heavy ball rolling that won't stop until you or the accused suffers profound embarrassment.

(Continued on page 4)

*(Continued from page 3)*

And remember: there is a big difference between those who are deliberately cheating to win an event, and those who don't know any better than to psych once too often or to hesitate at the wrong time. Both types of players should be reprimanded, but the difference in the weight of the accusations and the severity of the punishments is huge.

I must digress a little bit to tell a story. Many moons ago when I worked for OKbridge, we kicked a Flight C player off for cheating. At the same time, the monthly ACBL Bulletin came out featuring this player's picture on its cover as the year's top Flight C masterpoint winner. Personally I found this somewhat disgusting. A few months later I had the opportunity to play 2 boards against this guy in an ACBL event. As I sat down I asked him, "Hey, you're (so-and-so) on OKbridge, aren't you?" The first hand he flubs. "How do you like it so far?" I ask innocently. The second hand he flubs. As my partner and I leave the table I give him my business card and say, "If you need any help with your account..." =)

### **Calling the Director:**

At every duplicate bridge game, there is at least one trained referee known as the director. She is responsible for making sure play proceeds in a timely manner and for settling any problems that might arise. Whenever you are unsure of the proprieties or laws of bridge, you may tell the rest of the players at the table that you are going to call for the director. Then simply raise your hand in the air and say, "Director, please." The director will then come over to help straighten things out. When in doubt, ask the director! That is what she's there for.

### **Skip Bids:**

A skip bid occurs when a player makes a bid that skips a level of bidding. Jump overcalls, for instance, are skip bids, as are double raises and splinters. The problem with skip bids, however, is that they can have an adverse effect on the opponents' tempo. For example, imagine an auction that begins:

Partner	RHO	You
1♥	3♠	?

With a bad hand you would be tempted to just pass without a second's thought. If you happen to have a good hand, though, you need some time to think about what to bid. If you finally decide to pass, you will have (unlawfully) shown some values in your hand through the slowness of your pass. Now partner, depending on whether or not you made a slow or fast pass, may decide to take another bid. This is why, in duplicate bridge, skip bid warnings are often used to tell one's opponents that a skip bid is about to be made. In every bidding box there is a red card that says Stop. To make a skip bid warning:

1. Pull out the Stop card and place it on the table
2. Say "Skip bid"
3. Pull out the desired bid from the bidding box and place it on the table
4. Put the Stop card back in the bidding box

The next player must then wait for 10 seconds before making his call, even if he has a lousy hand and has nothing to think about. The 10 second wait is supposed to prevent the unlawful conveyance of information by requiring players to make all their bids after the same time delay.

### **Some Do's and Don'ts**

1. You are not required to use skip bid warnings in duplicate bridge. However, should you decide to adopt the practice, you are supposed to always use warnings when about to make skip bids. In short, use them always or never.
2. When your RHO has made a skip bid warning, count ten seconds off in your head, not out loud.
3. Even if your RHO does not make a warning before a skip bid, it is usually best to wait a few seconds anyway.
4. Not all skip bids were created equal. There are some skip bid auctions where your opponents will not really expect you to wait ten seconds because you will rarely have anything to think about, and there are some skip bid auctions where your opponents really will expect you to wait the full ten seconds. Some examples of auctions where you usually can just pass quickly:

*(Continued on page 5)*

(Continued from page 4)

LHO	Partner	RHO	You
1NT	Pass	3NT	?

99% of uncontested game auctions end with three passes, so no one expects you to pause here before passing.

LHO	Partner	RHO	You
1♠	Pass	2♣	Pass
2♣	Pass	4♠	?

Ditto.

Some examples of auctions where you are really expected to pause:

LHO	Partner	RHO	You
Pass	Pass	2♥!	?

! Weak.

You are always expected to wait after a preempt.

LHO	Partner	RHO	You
1♦	Dbl!	3♦^	?

! Takeout.

^ Weak.

Similarly, you are always expected to pause after a weak skip bid by your RHO.

#### Summary:

- Be polite to your partner and your opponents. Bridge after all is only a game.
- Never vary the tempo of your bids or plays in an attempt to try deceiving the opponents.
- After a jump bid by your RHO, wait at least a few seconds before making a call.
- Don't psych more than once in a blue moon, and then only when partner isn't expecting it.
- Falsecard as much as you want, but never cross the line between what methods of carding you've agreed to use with your partner, and what methods of carding you're regularly using at the table.
- Never accuse anyone of cheating at the table. Any suspicions you might have in a tournament should be brought to the attention of a tournament official -- delicately!

When in doubt at duplicate bridge, don't hesitate to call the director.

**Milwaukee Fallfest Sectional**  
**October 2-4, 2009**  
**Cardinal Stritch University**  
**Kliebhan Conference Center**  
**6801 N. Yates Road, Glendale, WI**

**Friday, 10/2**

**9:30, 1:30**

**Stratified 299er Pairs**

**Saturday, 10/3**

**9:30, 1:30**

**Stratified 299er Pairs**

**Sunday, 10/4**

**10:00**

**Gary Williams Memorial Stratified Swiss**  
**Teams: Strat C: 0-300**

**Tournament Chair: Yvette Neary**  
**414-526-9035—yneary@firstweber.com**

**Partnership Chair: Nancy Wilkinson**  
**414-906-1471**

**FallFest Silver Point Sectional**  
**Lindner Conference Center**  
**660 E. Butterfield Rd, Lombard, IL ...**  
**(On the campus of Northern Baptist Theological**  
**Seminary, E. of Yorktown Mall at traffic light )**

**0-299 "I/N" Schedule**

**Friday, November 6**

**10:30 a.m. I/N Stratified Pairs**

**3:30 p.m. I/N Stratified Pairs**

**7:30 p.m. I/N Stratified Pairs**

**Saturday, November 7**

**1:00 p.m. I/N Stratified Pairs**

**6:30 p.m. I/N Stratified Pairs**

**Sunday, November 8**

**11:00 a.m. 299er Stratified Swiss Teams**

**0-100, 100-200, 200-300**

**Tournament Chairperson**

**Jan Churchwell, 847-714-1942, jan8242@gmail.com**



**For Information call:**  
**CCBA office, 630-235-4718,**  
**www.bridgeinchicago.com**

Madison Sectional

Fitchburg Community Center  
5520 Lacy Rd  
Fitchburg WI 53711  
(608) 270-4285

Friday, December 4

9:00 A.M. 299'er Pairs

1:30 P.M. 299er pairs Stratified by  
director

Players with 0-5 pts. play free if member of  
ACBL

Saturday, December 5

9:00 A.M. 299er pairs Stratified by  
director

1:30 P.M. 299er pairs Stratified by  
director

Chairman Diane Vaughan  
(608) 238-0851  
[vaughandiane@hotmail.com](mailto:vaughandiane@hotmail.com)

Partnerships Jim Mulbrandon  
(608) 848-7949  
cell 608-215-5768  
Use cell only Dec 1-6  
[Mulb1108@yahoo.com](mailto:Mulb1108@yahoo.com)



Reiter Center, 18-20 September 2009  
1858 S Michigan, Three Lakes, WI

Friday, Sept 18 1:30 pm 299er Pairs

7:00 pm 299er Pairs

Saturday, Sept 19 9:00 am 299er Pairs

1:30 pm 299er Pairs

7:00 pm 299er Pairs



0-5 ACBL Members play free all games

Chair Terry McCloskey, 715.546.8306  
[terrymar21@hotmail.com](mailto:terrymar21@hotmail.com)

Partnerships Kaye McCardle, 715.479.8963  
[kmac@newnorth.net](mailto:kmac@newnorth.net)

La Crosse Sectional

City Brewery & Hospitality Center, 1111 3rd Street, La Crosse, WI

Friday, 11/13

1:30 pm

199er Pairs

7:00 pm

199er Pairs



Saturday, 11/14

9:00 am

199er IMP Pairs

1:30 pm

199er Pairs

Partnerships: Mary (MJ) Sartz (608) 788-5364

Chairperson: Dave Melin (608) 797-3587

<mailto:melind0908@aol.com>

ACBL members with 5 or fewer points play free!

Labor Day Sectional

Weber Leisure Center  
9300 Weber Park Place, Skokie, IL

0-299er Intermediate/Novice Schedule

0-100, 100-200, 200-299

Friday, September 4

10:30 "I/N" Stratified Pairs

3:30 "I/N" Stratified Pairs

7:30 "I/N" Stratified Pairs

Saturday, September 5

1:30 "I/N" Stratified Pairs

7:30 "I/N" Stratified Pairs

Sunday, September 6

1:30 "I/N" Stratified Pairs

7:30 "I/N" Stratified Pairs



Monday, September 7

11:00 299er Stratified Swiss Teams

(Stratified 0-100/100-200/200-300)

Play-through with 2 single sessions

*All Intermediate/Novice games  
will be single session events.*

Co-Chairman Les Kent, [les2802kent@sbcglobal.net](mailto:les2802kent@sbcglobal.net)  
847-439-4696

Co-Chairman John Vincent, [jbldpro@hotmail.com](mailto:jbldpro@hotmail.com)  
847-394-5562

For information:  
630-235-4718 or CCBA Website at  
[www.bridgeinchicago.com](http://www.bridgeinchicago.com)

## 24/7 Hospitality Plus Central States Regional

October 19 — 25, 2009  
Grand Geneva Resort and Spa,  
Lake Geneva, Wisconsin  
on Route 50, 1/2 mile east of Route 12.  
Special Bridge Room Rate Available until 9/20  
Call 262-248-8811 or 800-558-3417

### Intermediate/Novice Events

Monday 7:30 pm

I/N Stratified Charity Pairs

Stratified Pairs 0-100, 100-200, 200-300

Tuesday through Friday 1:30 & 7:30 pm

Single Sessions

I/N Stratified Pairs 0-100, 100-200, 200-300

Saturday 1:30 & 7:30 pm

Single Sessions

299er Stratified Pairs 0-100, 100-200, 200-300

Sunday 10 am & 2 pm

299er Stratified Swiss Teams,

0-100, 100-200, 200-300

Two Single Sessions, More Points

Free Intermediate/Novice Dinner

(see daily bulletin for time and date)

Daily Speakers — Registration Gifts



### Amenities:

Guaranteed Partners

Daily Bulletins

Expert Lectures

Dining Coupons

Free Parking

Big Screen TVs

Mini-Fridges

Newly Renovated Spa

No Resort Fee!!

### Tournament Chairman

Jackie Addis 630-515-0101, jackieaddis@comcast.net  
www.bridgeinchicago.com

### Partnership Chairman

Carl Sharp 773-483-3734, ibsharp2@sbcglobal.net

### I/N Program

Angie Clark 847-272-1060, angieclark@comcast.net

### Bulletins

Suzi Subeck 847-509-0311, stansubeck@prodigy.net

## Ms. Information ...

Dear Ms.,

I am new to the game of duplicate. Recently I attended the SummerFest Regional in St. Charles, IL. I could not believe how much fun I had.

Every day I went to Lunch and Learn and got a free lesson from an ACBL accredited bridge teacher while enjoying a reasonably priced sandwich from the snack bar. The attendees were mostly novices but some were not. We got to ask questions of the teacher and I felt truly special.

I also played in the Monday Pro-Am. My Pro was courteous and kind and I learned a lot. (In fact, I got a top board on Tuesday by trying out a "new play"... I had Axx in my hand and Qx in dummy... I led low to the Qx at trick two! My LHO ducked and I had no losers in the suit! Cool, huh? My Pro taught me that.)

I went to a free novice dinner on Thursday night at Portillo's down the block and across from the tournament site with other novices. We were treated to an entertaining lecture from Gerry Symski (sp?) It was great.

I wasn't going to play over the weekend... My husband says I have to spend some time with him... but I couldn't stay away.

I loved the free evening lectures and the delicious evening snacks (pizza, ice cream, popcorn... something different every night!)

I took home the daily bulletins every day. I read them from cover to cover (FYI: the editor of this publication was the editor of those too!!) Even my hubby who doesn't play bridge loved the puzzles and jokes and the history of the St. Charles area... and I loved the bridge hands.

It was great to be there. I will be first in line next year to sign up for the Pro-Am ... and this time, I will plan ahead to be there for the whole week!

Thanks Chicago!

Newbie in District 13

## Hand Shapes from Fifth Chair

The thirteen cards in your hand can be distributed in MANY different ways. You might hold all thirteen clubs, but this is very, very, very rare. You might hold five spades, five hearts and three cards in the minor suits (diamonds and clubs, right?) This is a bit more common. You might hold four cards in two suits, three in another, and two in the remaining one. This is the most common "distribution" of cards.

A void is a suit in which you don't hold ANY cards. A singleton is a suit in which you hold one card. A doubleton is a suit in which you hold two cards and a tripleton three. (More cards than that are called "four-card suits," "five-card suits," etc.)

Suits with few cards are usually good for trump contracts (suit contracts) because usually you can trump when these suits are led. Thus, hands containing voids and singletons (and sometimes doubletons) have the right kind of distribution to play trump contracts. These are called distributional hands. Pretty easy to remember, eh?

Hands where you hold at most one doubleton, no singletons and no voids are sometimes better for no trump contracts because you're not likely to want to trump tricks. But don't forget that partner's hand might be distributional and partner might want to play in a suit contract. The important thing is what cards and points the partnership holds, not just what you hold. These kinds of hands are called flat or "balanced" because the numbers of cards in each of the suits is about the same.

If you hold...

♠ AK52 ♥ QJT8 ♦ Q62 ♣ K7

...then you have a flat hand. This is a specific 4432 type of hand because you hold "4" spades, "4" hearts, "3" diamonds, and "2" clubs: "4432."

The hand...

♠ 5432 ♥ 432 ♦ 32 ♣ 5432

is also flat (and has no points: UGH!) This hand is specifically 4-3-2-4, but, if you can't tell someone where your four-card suits are, it might be referred to as a generic 4432 type of hand too, since you hold two four card suits, a tripleton and a doubleton.

If you hold...

♠ KJ873 ♥ Q52 ♦ AK ♣ Q74

...then this is also a flat hand, but is now a generic 5-3-3-2 or a specific 5-3-2-3 hand. (For practice, how many points does it have? RIGHT! 16! If you miscounted, review Lesson 1 on counting points.)

There are some hands which aren't exactly flat, but aren't terribly distributional either. For example:

♠ K3 ♥ K3 ♦ KQJ653 ♣ KT7

This is somewhat distributional, since you have a lot of diamonds. But you don't have any singletons or voids. You do have two doubletons, and might be able to trump hearts or spades after you've used all of yours up (following suits or discarding, for example.) This hand is somewhat flat too. You hold two doubletons, so it's not a "perfectly flat hand". A hand like this is often referred to as "semi-balanced".

Thus, sometimes you have to decide how you're going to describe your hand to partner. Maybe you decide you'd like to call the last hand "flat." That will give you a certain choice of bids to make. If you say it's distributional, then you will probably have a different set of bids to choose from. The thing is: what do you want to tell partner about your hand? Decide, and then, if you get the chance, tell her something more on your next bid.

### Opener's Strength

Suppose you have dealt the following hand to yourself.

♠ AJT2 ♥ K83 ♦ QJ4 ♣ A87

Let's go through what you know about the hand. You hold a flat, 15 point hand. Your longest suit is spades, and all the other suits have equal length. You hold 5 points more than the average 10 points, so you might hold the most points at the table. You have a good hand. You'd like to make a bid and tell partner the good news. Therefore you should open 1NT on this hand according to SAYC (Standard American Yellow Card) which stipulates a count range of 15-17 HCP (high card points) for a 1NT opener.

But what if you dealt yourself...

♠ QJ4 ♥ K83 ♦ 987654 ♣ A

(Continued on page 9)



**Wisconsin Holiday Sectional****December 26-29****Best Western****Milwaukee Airport Hotel****5105 S. Howell****Milwaukee****Saturday****December 26****9:30 am****299er Stratified Pairs****2:00 pm****299er Stratified Pairs****Monday****December 28****9:30 am****299er Stratified Pairs****2:00 pm****299er Stratified Pairs****Tuesday****December 29****2:30 pm****Stratified 299er****Swiss Teams****Co Chairmen:****Yvette Neary****414-526-9035 (cell)****yneary@firstweber.com****Nancy Wilkinson****414-906-1471 (home)****Flamingo-nw@hotmail.com****Partnerships:****Kathy Lucas****414-354-2135 (home)****jkucas@ameritech.net***(Fifth Chair, Continued from page 8)*

You have a distributional (also called "unbalanced"), 12 point hand. You don't hold too much more than average. In fact, in HCP, you hold exactly average (10 points.) Do you want to tell partner about your long diamonds, or do you pass and try to say something later? We need to know the point ranges for making the first non-pass bid: an opening bid.

In SAYC there are traditional ranges for opening bids. If you bid or don't bid, you tell partner something about the number of points you have (and maybe about the hand shape too!)

For distributional hands, these ranges are (including length points):

- 0-12 - Not Enough to Open
- 13-15 - Minimum Opening Hand
- 16-18 - Strong Opening Hand
- 19-21 - Maximum Opening Hand
- 22+ - Powerful "Game Forcing" Opening Hand

These ranges are important to know. If you open, note that you have anywhere from 13 points upward. Partner only knows (point wise) that you hold at least 13. When the bidding gets back to you, you will make another bid which tells partner what KIND of opening strength you hold: minimum opener, strong opener, maximum opener, "game forcing" opener. If you don't hold enough to open, you'll have other ranges to use when partner opens. These will be discussed in the lessons starting with RESPONDER'S BIDDING.

For flat hands, any distributional points (e.g. points for length in suits) are usually not counted. The ranges for opening are:

- 0-11 - Not enough to open
- 12-14 - Not enough for 1NT, but open a suit
- 15-17 - Open 1NT
- 18-19 - More than 1NT, less than 2NT, open in a suit
- 20-21 - Open 2NT
- 22-24 - More than 2NT (as we'll see: open an artificial 2♣ bid, preparing to rebid 2N at your next turn)
- 25-27 - Game forcing (enough for game on your own!) - Either open 3NT or bid 2♣ and rebid 3NT

28+ - DUDE! What dealer did you bribe? Open 2♣ and jump to 4NT (asking partner if he wants to go on to 6NT)

Note that the NT bids are very precise. If you bid 1NT, partner knows a LOT about your hand already: we have 15 to 17 points, and no void or singleton. These ranges are also important to know. It will take some time to learn them. But you and your partner will be able to communicate a lot in these bids, so it's important to know them.

**Tournament Results:****SummerFest Regional, St. Charles, IL July 6-12**

Tuesday 299er Pairs - 11.0 Tables

MPs A B C Names

MPs	A	B	C	Names	Score
2.97	1			Catherine Westbrook, Winnetka IL; Russell Rojakovick, Burr ridge IL	64.58%
2.23	2			June Dostal, Naperville IL; Rolland Wakeman, Bellwood IL	58.04%
2.02	3	1		Judith Polo, Westmont IL; Lydia Wachal, Elmhurst IL	57.74%
1.58	4	2	1	Mary Fischer - Louis Fischer, Fond Du Lac WI	56.85%
1.04	5			Karen Anderson, Batavia IL; Neil Whittle, Carol Stream IL	56.25%
1.19	6	3	2	Virginia Enman, Glenview IL; Sue Lies, Wilmette IL	55.95%
0.89	4	3		Barbara Mulvanny, Evanston IL; Janet Nachman, Chicago IL	55.65%
0.67	5	4		Candy Hogan, St Charles IL; Christopher Robinson, Chicago IL	55.36%

Tuesday I/n Pairs - 6.0 Tables

MPs A B C Names

MPs	A	B	C	Names	Score
2.26	1	1	1	Todd Barre - Steven Barre, Elmhurst IL	63.00%
1.70	2	2	2	Kathryn Lefty - Marilyn Lewis, Glen Ellyn IL	58.00%
1.27	3	3	3	Andreina Panion, Wheaton IL; Margaret Fournier, Glen Ellyn IL	57.50%
0.95	4	4	4	William Shepherd, Chicago IL; Donald Sokol, Burr Ridge IL	56.00%

Wednesday Aft 299er Pairs - 13.0 Tables

MPs A B C Names

MPs	A	B	C	Names	Score
3.25	1	1	1	Marilyn Lewis, Glen Ellyn IL; Susan Hogge, Wheaton IL	61.86%
2.44	2	2	2	Camille Goulazian, Bonita Springs FL; Sharl Faganel, Bloomingdale IL	60.30%

(Results, Continued from page 9)

1.83	3	3	3	John Flershem - Robert McDonnell, Palos Heights IL	59.88%
1.63	4	4		B Busche, St Charles IL; Betty Nowak, St Charles IL	59.52%
1.14	5	5		Mary Warren, Wheaton IL; Carolyn Satrum, Downers Grove IL	57.89%
0.89	6	6	4	Janet Nachman - Sylvia Dunne, Chicago IL	56.94%
0.64			5	Mary Dandurand - Bonnie King, Glen Ellyn IL	51.10%

Pro/AM Pairs - 23.0 Tables

MPs	A	B	C	Names	Score
7.70	1	1		Linda Shaw, Geneva IL; Wayne Eggers, Woodridge IL	67.56%
5.78	2			Aurora Miller, Lagrange Park IL; Kay Hathaway, Glenview IL	63.39%
3.79	3/4	2/3		Christine Grygiel, Naperville IL; Owen Lien, Hickory NC	60.71%
3.79	3/4	2/3		Richard Axelrood, Highland Park IL; Keith Bach, Bensenville IL	60.71%
2.44	5			Bruce Derylo, Plainfield IL; Michael Slaven, Elkhart IN	59.52%
1.60	6/7			Carol Palmer, Northbrook IL; Ellen Gabriel, Chicago IL	59.23%
1.60	6/7			Sylvia Dunne, Chicago IL; John Russell, North Barrington IL	59.23%
1.91		4		Christopher Overpeck, Louisville KY; Aurel Stefanescu, Calgary AB	54.76%
1.48		5		Marilyn Richards, Wilmette IL; Sandy Golden, Oak Brook IL	54.17%
2.79		6	1	Marti Goldberg, Deerfield IL; Mickey Shaffer, Highland Park IL	52.98%
2.09			2	Barbara Field, Highland Park IL; Michael Kolacki, Chicago IL	52.68%
1.57			3	Andreina Panion, Wheaton IL; Maribeth Miller, Naperville IL	50.60%
1.03			4/5	Michael Cochran, Oak Park IL; George Adams, La Grange IL	49.70%
1.05			4/5	Elaine Vandenburg, Hinsdale IL; Marcia Wolf, Deerfield IL	49.70%

Thursday Evening I/n Pair - 5.0 Tables

MPs	A	B	C	Names	Score
2.27	1	1		Elizabeth Subkowsky - Robert Subkowsky, Chicago IL	70.50%
1.70	2	2		Shiaomay Young, Northfield IL; Kathleen Gerbosi, Glenview IL	59.50%
1.28	3			V Preston, Itasca IL; Dorothy Kosmal, Addison IL	55.00%
1.05	4	3		Claudia Dunn - Grace Tampa, Wheaton IL	54.00%

Monday Charity 299ers - 4.5 Tables

MPs	A	B	C	Names	Score
2.12	1	1		Janice Fields, Glen Ellyn IL; June Dostal, Naperville IL	68.76%
1.59	2	2		Charlotte Katz, Wilmette IL; Bobbi Gordon, Skokie IL	57.40%
1.55	3	3	1	Marilyn Lewis, Glen Ellyn IL; Andreina Panion, Naples FL	56.35%
1.16	4		2	Christopher Robinson, Chicago IL; James Newberry, Elburn IL	52.13%

Wednesday Eve I/n Pairs - 7.5 Tables

MPs	A	B	C	Names	Score
2.54	1	1	1	Camille Goulazian, Bonita Springs FL; Sharl Faganel, Bloomingdale IL	65.48%
1.91	2	2	2	Janis Morrisroe, Palatine IL; Jane Austermler, Barrington IL	62.45%
1.43	3	3		Linda Pelts - Donald Pelts, Memphis TN	61.18%
1.14	4	4	3	Vicki Kramer - Michael Kramer, Addison IL	58.92%
0.85	5	5	4	Norma Bradner - J Bradner, Addison IL	53.43%
0.71			5	Mary Fischer - Louis Fischer, Fond Du Lac WI	52.24%

Friday 299'er Pairs - 8.0 Tables

MPs	A	B	C	Names	Score
2.54	1	1	1	Dianne Pauser - Donald Pauser, Dixon IL	57.92%
1.91	2			Elaine Vandenburg - Karen Sarsfield, Hinsdale IL	55.00%
1.70	3	2	2	Vicki Kramer - Michael Kramer, Addison IL	54.58%
1.27	4	3	3	Roberta Goodall, Northfield IL; Patricia Gillis, Northbrook IL	54.17%
0.84	5/6	4/5		Kandy Ginsburg - Gloria Spero, Highland Park IL	53.75%
0.84	5/6	4/5	4	Kathryn Lefty - Marilyn Lewis, Glen Ellyn IL	53.75%

299er - 5.0 Tables

MPs	A	B	C	Names	Score
2.12	1	1		Grace Tampa, Wheaton IL; Ann Gerding, Naperville IL	61.11%
1.59	2	2	1	Todd Barre, Elmhurst IL; James Jacklin, Lagrange Park IL	59.72%
1.19	3			Elizabeth Gale - E Gerald Gale, Rockford IL	56.25%
1.03	4/5	3	2	Barbara Ehrmann - Dan Ehrmann, Buffalo Grove IL	52.08%
0.78	4/5			June Dostal, Naperville IL; Alice Leuffgen, Indian Head Pk IL	52.08%

Green Bay Sectional, July 17-19, Green Bay, WI

Fri Eve 299er P/T - Pairs - 9.0 Tables

MPs	A	B	C	Names	Score
1.81	1	1	1	Jo Kozlowski - Joan Peterson, Green Bay WI	68.15%
0.00	2	2		Eugene Trieglaff, Wild Rose WI; Barton Blum, Waupaca WI	58.04%
0.00	3	3		Barbara Stapleford, Luxemburg WI; Dorothy Thode, Green Bay WI	56.85%
0.90	4	4	2	Mary Fischer - Louis Fischer, Fond Du Lac WI	55.95%
0.00	5	5	3	Kathleen Barlament, Green Bay WI; Betty Jo Hathaway, De Pere WI	55.65%
0.51			4	Judyann Terrault, Powers MI; Barbara Schultz, Hermansville MI	50.89%

Fri Eve 299er P/T - Teams - 9 Tables

MPs	A	B	C	Names	Score
1.81	1	1		Jack Salm, Neenah WI; Jerry Pozolinski, Appleton WI; Eugene Trieglaff, Wild Rose WI; Barton Blum, Waupaca WI	
1.36	2	2	1	Janet Welk - Dorothy Thode, Green Bay WI; Amelia Butzen, Fond Du Lac WI; Barbara Stapleford, Luxemburg WI	
1.02	3	3	2	Jo Kozlowski - Joan Peterson, Green Bay WI; Mary Hedtke - Gerald Hedtke, Kaukauna WI	
0.76	4			Beezie MacNeil - Sue Erdmann - Kathleen Barlament, Green Bay WI; Betty Jo Hathaway, De Pere WI	

(Continued on page 11)

(Continued from page 10)

**Fri Aft 199er Pairs - 11.0 Tables**

MPs	A	B	C	Names	Score
2.00	1	1		Jerry Pozolinski, Appleton WI; Jack Salm, Neenah WI	74.07%
1.50	2	2		Eugene Trieglaff, Wild Rose WI; Barton Blum, Waupaca WI	62.96%
1.28	3	3	1	Mary Hedtke - Gerald Hedtke, Kaukauna WI	57.64%
0.96	4	4	2	Mary Freier, Marquette MI; Sandra Culver, Green Bay WI	55.32%
0.72	5	5	3	Sue Protzman, Oneida WI; Doris Thompson, Green Bay WI	53.70%
0.50	6			Alice Depue - Colleen Roberts, Marquette MI	53.24%
0.54		4		Kathleen Barlament, Green Bay WI; Betty Jo Hathaway, De Pere WI	53.01%
0.41		5		Janet Welk, Green Bay WI; Amelia Butzen, Fond Du Lac WI	52.55%

**Sat Mor 199er Pairs - 10.0 Tables**

MPs	A	B	C	Names	Score
1.90	1			David Lading - Maggie Jansen, Appleton WI	63.19%
1.53	2	1		Jerry Pozolinski, Appleton WI; Jack Salm, Neenah WI	62.27%
1.15	3	2		Eugene Trieglaff, Wild Rose WI; Barton Blum, Waupaca WI	59.72%
0.86	4	3		Joan Wasserberg - Gene Wasserberg, Waupaca WI	58.56%
1.13	5/6	4	1	Kathleen Barlament, Green Bay WI; Betty Jo Hathaway, De Pere WI	57.41%
0.53	5/6			Jack Weinert, Sturgeon Bay WI; Mary Freier, Marquette MI	57.41%
0.85		5	2	Judy Charles - Jean Raymakers, Green Bay WI	55.79%
0.64			3	Mary Fischer - Louis Fischer, Fond Du Lac WI	50.46%
0.42			4/5	Jay Quella - Catherine Quella, Weyauwega WI	48.38%
0.42			4/5	Janet Welk, Green Bay WI; Amelia Butzen, Fond Du Lac WI	48.38%

**Sat Eve 199er Pairs - 4.0 Tables**

MPs	A	B	C	Names	Score
1.33	1	1	1	John Hathaway - Betty Jo Hathaway, De Pere WI	68.45%
1.00	2	2	2	Mary Fischer - Louis Fischer, Fond Du Lac WI	55.95%
0.75	3	3		Doris Thompson, Green Bay WI; Sue Protzman, Oneida WI	55.36%

**199er Morning Swiss - 4 Tables**

1.33	1			Shirley Treadway - James Treadway, Kaukauna WI; Jo Kozlowski - Joan Peterson, Green Bay WI
------	---	--	--	--

**199er Afternoon Swiss - 4 Tables**

1.33	1			Kathleen Barlament - Beezie MacNeil, Green Bay WI; Mary Freier, Marquette MI; Betty Jo Hathaway, De Pere WI
------	---	--	--	---

**Bob Charlson Memorial Sectional, Pewaukee, WI, 7/31-8/2**

**Friday Morning 299ers - 5.0 Tables**

MPs	A	B	C	Names	Score
1.51	1			Robert Rice - Dianne Rice, Racine WI	62.50%
1.33	2	1		Evelyn Gerum - Elaine Howell, Racine WI	59.50%
1.00	3	2		Monica Ansay, Oconomowoc WI; Suzanne Haidinger, Wales WI	54.00%
1.11	4	3	1	Mary Fischer - Louis Fischer, Fond Du Lac WI	53.50%
0.73		2/3		Tami Krempel - Paatricia McIlquham, Cudahy WI	49.00%
0.73		2/3		Barbara Swansby, Pewaukee WI; Patricia Peck, Hartland WI	49.00%

**Friday Aft 299er Pairs - 5.0 Tables**

MPs	A	B	C	Names	Score
1.51	1	1		Richard Krueger - Thomas Krueger, Milwaukee WI	64.50%
1.13	2	2	1	Mary Fischer - Louis Fischer, Fond Du Lac WI	58.50%
0.85	3	3		Evelyn Gerum - Elaine Howell, Racine WI	55.50%
0.83	4	4	2	Melodee Curtes, Hartford WI; Barbara Schuelke, Menomonee Falls WI	51.00%

**Saturday Morn 299er Pairs - 4.5 Tables**

MPs	A	B	C	Names	Score
1.51	1	1		Cyann Martin, Neenah WI; Mary Ann Romberg, New London WI	66.65%
0.99	2/3			Barb Dettmering - Joan Koenig, Pewaukee WI	57.68%
1.00	2/3	2		Edward Eboch, Chandler AZ; Walter Jones, Mt Prospect IL	57.68%
0.75	4	3		Barbara Blackburn - Bonnie Jenko, Waukesha WI	53.44%

**Stars of Tomorrow Sectional, Rolling Meadows, IL, 5/2-3**

**Sat. Aft. Stratified Prs - 8.5 Tables**

MPs	A	B	C	Names	Score
1.92	1			Gordon Parks - Charlotte Parks, Long Grove IL	63.17%
1.44	2			Bonnie Clarke - Ginger Griffin, Chicago IL	59.54%
1.08	3			Stephen Bell, Warrenville IL; Robert Kucaba, Downers Grove IL	59.22%
1.62	4	1	1	Diane Shachter - Howard Shachter, Deerfield IL	57.57%
1.22	5	2		Diane Kelley, Chicago IL; Louise Lane, Winnetka IL	56.61%
0.91		3		Bradley Shaps - Gail Shaps, Northbrook IL	56.11%
0.83		4	2	Jo Hannan, Orland Park IL; Doris Griffin, Palos Park IL	51.79%
0.51		5		Charlene Whitney, Winnebago IL; Sybil Brown, Rockford IL	51.46%

**Sat. Compact KO - 5 Tables**

MPs	Rank	Names
2.86	1	Robert Subkowsky - Valerie Bennett - Elizabeth Subkowsky, Chicago IL; Ellen Rubert, Evanston IL
2.00	2	John Flershem - Robert McDonnell, Palos Heights IL; Barbara Schwartz, Morton Grove IL; Patricia Latkin, Chicago IL

**Sat. Morn. Stratified Prs - 7.5 Tables**

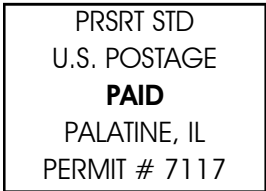
MPs	A	B	C	Names	Score
1.82	1	1	1	Doris Griffin, Palos Park IL; Jo Hannan, Orland Park IL	57.89%
1.37	2	2	2	J. Micheal Dimond - Virginia Dimond, Elmhurst IL	57.24%



(Continued on page 12)

**The District 13 I/N Newsletter, Fall, 2009**

Suzi Subeck, Editor  
Email: stansubeck@prodigy.net  
106 Penn Court, Glenview, IL 60026  
Voice: 847-509-0311; Fax: 312-220-9114



**Upcoming Tournaments**

- Labor Day Sectional, 9/4-7, Skokie, IL
- Three Lakes Sectional, 9/18-20, Three Lakes, WI
- Milwaukee FallFest Sectional, 10/2-4, Glendale, WI
- Unit 123 FallFest Sectional, 11/6-8, Lombard, IL
- LaCrosse Sectional, 11/13-15, LaCrosse, WI
- Madison Sectional, 12/4-6, Fitchburg, WI
- Wisconsin Holiday Sectional, 12/26-29, Milwaukee, WI

---

1.02	3	3	Robert Judd, Algonquin IL; Stephen Blitz, Fitchburg WI	56.32%	<i>(continued from page 11)</i>
0.77	4	4	3 Diane Shachter - Howard Shachter, Deerfield IL	54.04%	
0.58	5	5	Charlene Whitney, Winnebago IL; Sybil Brown, Rockford IL	54.02%	
0.54		4	Lorraine Spike, Mt Prospect IL; Ellen Katz, Riverwoods IL	51.68%	

Sunday Swiss Teams - 10 Tables

MPs	A	B	C	Names	Score
3.03	1	1		Doug Fischer, Des Plaines IL; Catherine Westbrook, Winnetka IL; William Shunas, Chicago IL; Lawrence Wolfson, Schaumburg IL	
2.27	2			Cory Perkers - Fred Johnston - James Doyle, Chicago IL; Stephen Blitz, Fitchburg WI	
1.70	3	2	1	Dennis Cahillane - Wen Yang Qi - Kevin Choi - Suzanne Doering, Chicago IL	
1.28	4			Elaine Vandenburg - Karen Sarsfield, Hinsdale IL; Marva Anderson, Burr Ridge IL; Jane Norman, Indianhead Park IL	

Hayward/Minong Sectional, 5/14-17, Hayward

Thursday Evening I/N Pair - 5.5 Tables

MPs	A	B	C	Names	Score
1.52	1			Ed Stoever - Rita Wiegenstein, Rhineland WI	58.86%
1.14	2	1		Ronald Fess - Linda Fess, Rochester MN	56.56%
0.86	3	2		Rosemary Whitson - Larry Whitson, Burnsville MN	55.44%
0.64	4			Carole Rusch, Gordon WI; Janet Enfelt, Hayward WI	54.80%

Friday Morning I/N Pairs - 5.5 Tables

MPs	A	B	C	Names	Score
1.52	1	1		Edith Berg, Barnes WI; Connie Jancoski, Trego WI	64.47%
1.14	2	2	1	Susan Jensen, Spooner WI; Judy Rubertus, Webster WI	61.35%
0.86	3	3	2	Ronald Fess - Linda Fess, Rochester MN	58.98%
0.64	4	4		Joyce Young - Janet Welk, Green Bay WI	55.24%

Friday Afternoon I/N Prs - 8.0 Tables

MPs	A	B	C	Names	Score
1.71	1	1	1	Kimberly Segar - Lisa Ihrke, Burnsville MN	66.67%
1.28	2			Margaret Rich, St Paul MN; Virginia Lea, Elgin IL	61.25%
0.96	3			Jane Schoening, Edina MN; Sandra Lyons, Bloomington MN	57.50%
0.96	4	2		Janet Welk - Joyce Young, Green Bay WI	56.25%
0.72	5	3		Edith Berg, Barnes WI; Connie Jancoski, Trego WI	55.42%
0.74	4	2		Curtis Kristensen - Ben Kristensen, Duluth MN	48.75%

Saturday Morning I/N Prs - 4.5 Tables

MPs	A	B	C	Names	Score
1.43	1	1	1	Curtis Kristensen - Ben Kristensen, Duluth MN	59.74%
1.07	2			Margaret Rich, St Paul MN; Virginia Lea, Elgin IL	58.44%
0.89	3	2	2	Robert Larson - Barbara Larson, Medford WI	52.38%
0.67	4	3		Rosemary Whitson - Larry Whitson, Burnsville MN	50.25%