

I/N News ... especially for you!

Volume 3, Issue 1

Suzi Subeck, Editor
 Marilyn Charlson, President
 Tom Sucher, Vice President
 Ellen Wiebe, Secretary-Treasurer

“A Guide to Being a Good Bridge Player” by Frank Fongasira A Review by Suzi Subeck

Inside this issue:

This book is designed to provide incites into how to:

1. Making correct opening leads in no trump and trump contracts.
2. Bending the odds in your favor when taking finesses.
3. Turning your potential winners into actual winners.
4. Applying safety plays to insure your contracts.
5. Acquiring better skills in card reading.
6. Making 'impossible' contracts through the art of the “squeeze.”
7. Placing an opponent on lead so that he must concede a trick.
8. Using deceptive skills to create winners where none existed .

Book Review 1

Takeout
 Doubles 4

It is intended to improve the game for the beginner, as well as the intermediate and expert player. Here are some sample lessons excerpted directly from the publication:

OPENING LEADS : *WELL BEGUN IS HALF DONE.*

Letters to the
 Editor 7

1. It is usually correct to lead a trump when:

(a) the responder bids INT to deny support for the first bid suit as in 1♠ - INT, 2♥ - Pass since, here, the declarer intends to ruff his losing spades in the dummy.

District 13
 Spring Regional
 Schedule 8

(b). the opponents bid two suits and end up playing the third bid suit as in 1♥ - 1♠ - 2♣.

♠ 7
 ♥ 984
 ♦ A654
 ♣ J9874

We are online. 9
 Look for our 1st
 online only issue
 coming in June!!

(c). You are strong in three side suits

(d). You have five ragged trumps.

♠ J542
 ♥ Q63
 ♦ QJT
 ♣ AT2

(e). You defend against a sacrifice bid.



♠ QT83
 ♥ AT2
 ♦ 832
 ♣ KQ5

Improving your
 partnership 9

A lead of a trump to East's Ace and a heart return will defeat the contract. The declarer must lose 6 tricks and go one down.

♠ AK96
 ♥ KJ75
 ♦ K97
 ♣ 63

On defense 12

If you opt for a safe lead, for example, the ♦Q, the declarer will make two spades, two spade ruffs, two hearts and two diamonds.

Green Bay Sectional

May 2-4, 2003

DePere Community Ctr
600 Grant Street
De Pere, WI 54115
(920) 339-4097

Friday, May 2
Stratified 199er Pairs
(Awards for Winners)

ACBL Members with
0-5 points play free
throughout the
tournament.

Chairman:
Charleen Guinther
(920) 337-9762

(Book Review, continued from page 1)

Finessing and Avoidance: *No player is worth his salt who is not an expert in finessing.*

Avoidance:

♠ 6432
♥ AKJ4
♦ AQT9
♣ 6



♠ AK9
♥ T53
♦ KJ64
♣ K42

Against 3NT. West leads a small diamond. In which hand should it be won? Plan South's play.

Answer: You should win in the dummy and lead a small spade to your hand. Play the nine of spades if East plays low. This is an avoidance technique to keep East off lead and prevent him from leading a club through your king.

If spades split 3-3, you can claim. If not you should lay down the ace and king of hearts and if the queen of hearts does not drop, lead toward the king of clubs as the last resort for your ninth trick.

*All our dreams can
come true, if we have
the courage to
pursue them.*

--Walt Disney

Playing In No Trumps - *Staying ahead in the race.*

Counting the Winners

♠ J6
♥ 753
♦ T85
♣ AKJ65



♠ AQ32
♥ AQ
♦ A9764
♣ 74

West leads a small heart to his partner's ♥J and your ♥Q

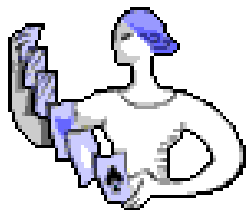
Plan your play if you are in

- one no trump
- two no trump
- three no trump

You count six winners in all: two hearts, one diamond and two clubs. Playing in:

- one no trump you need one more winner. So you lead a small spade to the Jack to set up another spade winner before the defenders can knock out your Ace of hearts.
- two no trump, you need two extra winners. Setting up a trick in spades will do you no good. You must try diamonds or clubs. A club finesse will give you a fifty-fifty chance. The odds are better for a 3-2 split in diamonds. You will have to lose the lead twice but then the defenders can only collect five tricks - three hearts and two diamonds - and you will still make your contract.
- three no trump, you need three more tricks. You must hope for a successful club finesse and a 3 - 3 split in the suit. Yes, it is a long, long shot but this is the only chance.

(Continued on page 3)



Pick a lead... any lead!

Playing In Trumps - All is Well, You Trump Well

Exercise: Try this:

- ♠ AK76
- ♥ AT85
- ♦ 65
- ♣ K94



Opening Lead : J of spades
 The contract is four hearts. What is your best play?

- ♠ Q
- ♥ KQJ976
- ♦ KT
- ♣ 7653

The answer: Here is the entire layout:

- ♠ AK76
- ♥ AT85
- ♦ 65
- ♣ K94

- ♠ JT98
- ♥ 4
- ♦ AQJ8
- ♣ QT87



- ♠ 5432
- ♥ 32
- ♦ 97432
- ♣ AJ

- ♠ Q
- ♥ KQJ976
- ♦ KT
- ♣ 7653

You win the spade queen , draw out the required rounds of trumps ending in the dummy and discard two diamonds on the spades.

Now lead to the king of clubs. If East has the ace of clubs, you will make your contract by ruffing the fourth club in the dummy if the suit does not break 3-3.

Hayward-Minong Spring Sectional

LCO Casino Lodge & Convention Center

May 16-18, 2003

13767 W County B
Hayward, WI 54843

Ask for Bridge Rates:
1-(800)-526-5634

Friday, May 16

1:30 Strat 0-200 Pairs

7:00 Strat 0-200 Pairs

Saturday, May 17

1:30 Strat 0-200 Pairs

7:00 Strat 0-200 Pairs

0-5 point members play free at all games!

Chairman:

Tess Schirmer

(715) 466-2599

Do what you feel in your heart to be right-for you'll be criticized anyway. You'll be damned if you do, and damned if you don't.

--Eleanor Roosevelt

The three sample hands give you a feel for how the text is aimed. Mr. Fongasira employs assorted interesting techniques to make learning a fun experience. His examples are concise and his explanations are clear and easy to follow. However, his logic is technically simplistic and he often missed the finer points.

Beginning players can benefit from the lessons while intermediate players will enjoy doing the exercises. It is probably not technically sophisticated enough for advanced players.

The published price is \$19.90. For more information or to order your copy, you may contact Frank Fongasira at 28 Burnham Street, Enfield,CT, 6082-6102, Tel.860-745-7452.

Look for more excerpts of the book in future issues of the *I/N News* ... especially for you!



Playing cards stimulates your thinking and keeps you young at "heart!"

**63rd ANNUAL
Minocqua-Lakeland
Bridge Sectional**

June 4-8, 2003

Lakeland Retirement
Center

412 Balsam
Woodruff, Wisconsin

Chairman:
Judy Gaardner
(715) 356-7220

Partnerships:
JoAnne Zickert
(715) 356-6303

Takeout Doubles by Jim O'Neil

The takeout double is perhaps the most widely used – and misused – convention in contract bridge. What are the requirements for a takeout double?

In general, to make a takeout double of an opening bid of one of a suit, the doubler should have at least an opening hand with good support for the unbid suits. Without good support for one or more of the unbid suits, the doubler should have a little extra high-card strength. With no support for an unbid suit, the doubler must have a very good hand indeed.

Consider a hand such as: ♠ – AJ65 ♥ – 7 ♦ – K743 ♣ – KQ52

After an opening bid of **1♥** by RHO, this is an ideal hand for a takeout double. Whichever suit partner responds, this hand will provide a very good dummy – good 4-card support, with 13 high-card points and a singleton.

Should RHO open **1♠**, however, this hand does not qualify for a takeout double. Partner will most likely respond in hearts, and we have no safe recourse. Partner, with very few points, is obliged to bid something – his most likely response is **2♥**. And now we have no good rebid. We could guess to bid 3 of a minor, hoping to find partner with support, but that would involve a guess at the 3-level. Trying to play 2NT opposite a partner who is nearly broke will usually prove hopeless.

Before making any bid, especially a take-out double, consider partner's likely response. If you will have no good rebid, consider another action.

The doubler promises partner not only a certain amount of high card strength, but a certain amount of safety – either support for whatever suit his partner responds, or a very good hand with a good suit of his own.

With ideal shape – 4 or more cards in every unbid suit, a double can be made with as few as about 11 high-card points. As the distribution gets less ideal, greater high-card strength is needed.

A reasonable rule of thumb:

- For each unbid major suit with only 3 cards – add 2 points to our minimum requirement.
- For each unbid minor suit with only 3 cards – add 1 point to our minimum requirement.
- For each card more than 1 in opener's suit – add 1 point to our minimum requirement.

For example:

- To double an opening bid of **1♥** by RHO:
 - With 4-1-4-4 distribution, a minimum of 11 hcp is necessary.
 - With 4-1-3-5 distribution, a minimum of 12 hcp (11+1) is necessary.
 - With 4-2-3-4 distribution, a minimum of 13 hcp (11+1+1) is necessary.
 - With 3-2-4-4 distribution, a minimum of 14 hcp (11+2+1) is necessary.
 - With 4-3-3-3 distribution, a minimum of 15 hcp (11+2+1+1) is necessary.

With fewer than three cards in an unbid suit, doubler should have a very powerful hand – a hand that was too strong for an simple overcall or a **1NT** overcall.

Responding to a Takeout Double: A takeout double is just that – doubler wants partner to “take it out”, that is, to bid something. It is important for the responder not to underestimate the value of his hand. Remember, the doubler is aware that responder could have nothing. Even with zero points, responder must bid. With a reasonable hand, then, responder must show his values.

If partner doubles an opening bid of **1♥**, we cannot bid **1♠** on all of these hands:

- ♠ – J765 ♥ – 652 ♦ – T63 ♣ – 942
- ♠ – K765 ♥ – 52 ♦ – AT6 ♣ – Q942
- ♠ – AQ75 ♥ – 52 ♦ – KT6 ♣ – AJ42

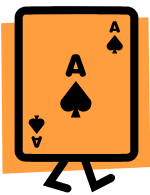
If partner doubles 1 of a suit and LHO passes:

A non-jump bid in a new suit shows a weak hand – about 0-8 pts. (Distributional values should be included.)

(continued on page 5)

"Education is what survives when what has been learned has been forgotten."

-B. F. Skinner



The ace of trump
always scores a
trick!

A jump bid in a new suit shows good values – at least 9 pts, but is not forcing.

A NT bid shows values and stoppers in opener's suit.

A cue-bid (a bid of the opener's suit) is the only forcing bid. It promises the values for game unless doubler and responder are both minimum and there is no major suit fit.

With fewer than 5 points, responder makes a non-jump bid in a new suit. Responder should generally bid his longest suit, but should prefer a 4-card major to a 4- or 5-card minor, especially if the major can be bid at the 1-level. Responder should usually not compete further unless doubler shows an extremely powerful hand. If RHO bids immediately over the double, responder should pass. With 5-7 points, responder still makes a non-jump bid in a new suit. Responder should usually bid his longest suit first; but with two suits, responder should try to bid them both. Responder is strong enough to compete further; and if RHO bids immediately over the double, Responder should bid. With 8-11 points, game is possible if partner has more than a minimum double. It is important for responder to show his values. Responder should jump in a new suit, or bid **1NT** with opener's suit stopped. (If RHO bids a new suit over partner's double, responder does not need stoppers – partner's double implies something in that suit.) Responder should prefer a jump in a major to a **1NT** bid, but should prefer a **1NT** bid to a jump in a minor. With 12-13 points, game is probable. Responder can bid **2NT** with the opener's suit stopped. Otherwise, responder should cuebid and then invite game. With 14 or more, game must be reached – responder should bid **3NT** with good stoppers in opener's suit, or can jump to game in a suit with a very good suit. Otherwise responder should cuebid and push to game. There is only one situation in which responder is allowed to pass – when responder has an extremely good holding in opener's suit (something like KQT965 or better), he can “convert” the takeout double to a penalty double.

Rebids by the Doubler - Just as responder should not underestimate his hand, it is important for the doubler not to overestimate the value of his hand. With a normal minimum takeout double, the doubler should usually pass at subsequent turns unless forced by partner. Any other bid promises more than a minimum.

After a non-jump suit response to a takeout double: With 16 or fewer points, doubler should pass. There is not enough for game. Responder has fewer than 8 points and could well have zero. With 17 or more points and 4 or more cards in responder's suit, doubler should raise. Doubler must remember that responder might be completely broke. After a 1-level response, doubler should raise to 2 with 17-19, raise to 3 with 20-22, and raise to 4 with 23 or more. After a 2-level response, doubler should raise to 3 with about 17-21, and raise to 4 with 22 or more. With a good hand and a good suit, doubler can bid his own suit. This shows a hand that was too good to simply overcall. To double and then bid a suit that could have been overcalled at the 1-level promises about 17-20 points. With an even stronger hand and a good suit, doubler can jump in his suit to the appropriate level – he should bid what he can make in his own hand. With a strong balanced hand, doubler can bid Notrump. This shows a hand too strong for a direct 1NT overcall. After a 1-level response, a bid of 1NT shows about 19-21, a jump to 2NT shows 22-24, and a jump to 3NT shows 25+. After a 2-level response, a bid of 2NT shows about 19-22, and a jump to 3NT shows 23 or more. Finally, with a good hand and no other clear-cut action, doubler can cue-bid – that is, bid opener's suit. This promises about 19 or more points; responder and doubler can bid naturally until the best contract is reached.

If responder makes a non-jump suit response after an intervening bid, he is promising some values – about 5-7. Doubler need not fear that partner is totally broke, but must remember that partner has denied 8 points. Doubler can raise a 1-level response to 2 with 17-18, to 3 with 19-20, or to 4 with 21+; doubler can raise a 2-level response to 3 with 17-19, or to 4 with 20+. A non-jump NT bid should show about 19-20, while a jump in NT should show 21+.

When responder makes a value-showing bid of 1NT or a jump in a suit, doubler should pass with a minimum (about 11-13 points). With 14-15 points, doubler should invite game. With 16 or more, doubler should insist on game.

When responder bids 2NT, doubler should go on to game unless he has an absolute minimum.

When responder begins with a cuebid, doubler must bid. Doubler and responder should start by bidding their best suits. Game will be reached unless both doubler and responder are minimum and there is no major suit fit.

LHO opens **1♦**, Partner doubles, and RHO passes. What do you bid with:

- 1) ♠ – 8752 ♥ – K652 ♦ – T63 ♣ – 92
- 2) ♠ – K752 ♥ – A652 ♦ – T63 ♣ – 92
- 3) ♠ – 752 ♥ – 652 ♦ – T632 ♣ – 942

(Continued on page 6)

Green Bay Regional

August 11-17, 2003

RADISSON HOTEL

2040 Airport Drive

Green Bay, WI 54313

920-494-7300

Special Casino Package

at \$109.00 /night

Make reservations

Before July 21, 2003

199er Schedule:

Single Session Games

Tues. through Sat.

9:30am and 2:30pm

0-5 members play free
all week!

Awards & Pictures for
winners of all
sessions.

Free mini-lesson Daily
at 2:00 p.m.

199er Chairman:

Marian Sabee

(920) 836-2926

*"Whenever people
agree with me I always
feel I must be wrong."*

-Oscar Wilde



Count your winners
and your losers
BEFORE you play to
the first trick!

(Takeout Doubles, Continued from page 5)

- 4) ♠ – 75 ♥ – K532 ♦ – T6 ♣ – T7642
5) ♠ – K752 ♥ – 762 ♦ – A6 ♣ – Q762
6) ♠ – AQ7653 ♥ – K75 ♦ – 732 ♣ – 4
7) ♠ – K75 ♥ – Q72 ♦ – KJ42 ♣ – T52
8) ♠ – AQ3 ♥ – K742 ♦ – J432 ♣ – A5
9) ♠ – A6 ♥ – 72 ♦ – KJT974 ♣ – 632

Again, LHO opens 1♦ and partner doubles. This time RHO bids 1♠. What do you bid with:

- 10) ♠ – 65 ♥ – Q654 ♦ – 863 ♣ – J872
11) ♠ – 65 ♥ – AQ64 ♦ – 863 ♣ – J872
12) ♠ – 65 ♥ – Q64 ♦ – KJ86 ♣ – A872

The auction proceeds as follows:

<u>RHO</u>	<u>You</u>	<u>LHO</u>	<u>Partner</u>
1♥	double	pass	1♠
pass	?		

What do you bid with the following hands?

- 13) ♠ – A764 ♥ – 63 ♦ – KQ74 ♣ – A73
14) ♠ – AK64 ♥ – 63 ♦ – KQ74 ♣ – AJ3
15) ♠ – A6 ♥ – KJ74 ♦ – KQ74 ♣ – AQ3
16) ♠ – A6 ♥ – 64 ♦ – AKJ765 ♣ – AK3
17) ♠ – A64 ♥ – Q3 ♦ – AQ32 ♣ – AK75

Answers to Takeout Doubles, hands 1-17:

This hand is worth one bid. Bid 1♥.

With 7 points, try to bid twice. Bid 1♠, intending to bid Hearts next.

You cannot pass. Bid 1♥.

Prefer a major to a minor. Bid 1♥.

This hand is too good for a simple 1♠ response. A jump to 2♠ is better than 1NT.

You know where this hand belongs. Bid 4♠.

With 9 points, no major and good stoppers in the opponent's suit, bid 1NT.

You have enough to insist on game, but which game. 4♥ is probable, but 3NT and even 4♠ cannot yet be ruled out. Start with a cue-bid of 2♦.

This is the one situation where you are allowed to pass. With 4 trump tricks and an Ace, can probably set 1♦ more than the value of whatever contract you can make.

RHO's bid has taken you off the hook. Pass.

With 7 points, get in and compete. Bid 2♥.

Bid 1NT. Don't worry about Spades; partner's double of 1♦ implies Spades.

Pass. Don't bid the same values twice; Partner has at most 8 points. With 17 points, this hand is worth a raise to 2 Spades.

Bid 1NT, showing a hand that was too strong to overcall 1NT initially.

Bid 2D, showing a hand that was too strong to overcall 2♦ initially.

Cue-bid 2♥, showing a good hand, but with no good bid available. Further bidding should allow the right contract to be reached.

Springtime Sectional

Appleton, Wisconsin
April 4-6, 2003



Thompson Community Center
820 W. College Avenue
(Highway 47 @ College Ave)

Friday, April 4: 1:00 pm 199er
Pairs - Trophies for winners!

Chairman: Carolyn Kuske
(920) 749-1258

Rockin' Rockford Regional



June 16-22, 2003

Indoor Sports Center (ISC),
8800 E. Riverside Drive, Loves
Park (Rockford), IL
(1 mile east of I-90, E.
Riverside Drive exit)

Host Hotel:
Quality Suites

7401 Walton, Rockford

Approximately 5 miles south of
ISC via I-90; exit State St, then
right - 815-227-1300

King suite: \$70

Double suite: \$85

Complimentary HOT breakfast
and evening social hour.

Two single session events every
day, Tuesday thru Saturday,
Plus a Special Newcomers
Game for players with under 20
masterpoints on Saturday.

AWARDS FOR WINNERS

199er & Newcomer Chairman:

Mary Jo Sergent
815-874-4157

mjosarge@aol.com

*Partnerships guaranteed up until 1
hour before game time.*

Letters to the Editor

Dear Suzi,

It's me again. This happening was really fun. Hope you think so too:

Bridge is a wonderful game but it's the people you meet that make it memorable. Meet Maurya and Mike Jenner.

At the Labor Day Sectional in Skokie this year, my partner, Marie Athey and I asked at the partnership desk for a team to join us in the Monday Swiss Team game. On Friday, the tournament chairman, Kay Hathaway, said she would try. On Saturday, she said they were working on it. On Sunday, she said they most likely would have a team for us. Come Monday, it happened.

A tall, lean, blond gentleman and his wife wanted to play. We were happy because we just wanted to play, also. They were young students (maybe 30-35) of director, Rick Mueller, who introduced them to us. Rick came over to give them some playing strategies.

It turns out that Maurya and Mike met in business school. He's from London and she is from Minnesota. Guess which one has the accent?

They had been financial consultants before he retired two years ago to play croquet. "Is there money in croquet?" I asked. Last year he earned \$100 and it didn't pay his expenses. "Did you marry a wealthy woman?" I asked. No, unfortunately, he hadn't. "Maurya, did you marry a wealthy man?" I asked. No, unfortunately, she hadn't. I figure they must have done well as consultants. They did travel quite a bit but that stopped when she became pregnant.

What to do!!! They took up bridge in February. They joined the ACBL on Monday, September 2, 2002. They played in their first duplicate game and tournament the same day. To top it all off, they won 2.13 silver points.

I told them that it isn't always this easy but what do I know!

Barbara Harris

An excerpt from another note we received ... sender's name withheld at his request ...

Dear Suzi,

Thank you for the I/N News. It is a nice little newsletter. Since I have been receiving it, however, and with a thorough search, I was unable to discover anywhere within the newsletter what I/N meant. Yes it did finally occur to me that I is for intermediate and N is for Novice. Since I have been playing bridge since 1973,

(Continued on page 8)

"Eight Ever - Nine Never" means that with eight cards in a suit between your hand and dummy's hand, you should finesse for a missing queen. With nine cards between you and dummy, you should play off the ace and king and hope the queen drops.

Nobody trips over mountains. It is the small pebble that causes you to stumble. Pass all the pebbles in your path and you will find you have crossed the mountain.

Unknown

A **Skip Bid** warning means that you are about to jump the bidding one or more levels. You should use this warning any time you are skipping the bidding. It may be a skip bid to show a strong jump shift or a preemptive suit or jump raise. It simply alerts the next bidder that he should wait ten seconds before taking any action to avoid imparting any unauthorized information.

(Letters to the Editor, Continued from page 7)

and it simply through lack of a concentrated effort that after 15+ years as a member of ACBL, I am not a Life Master, and probably won't be one until I am 90 - another 30+ years. Am I to be considered an Intermediate/Novice all that time?

Just a thought. The newsletter is still thoughtfully prepared. Best wishes...

A peek is worth a thousand finesses.
Always hold your cards back so your opponents will not be able to see them.

In response:

District 13 has chosen to define "Intermediate/Novice" as anyone with less than 300 masterpoints who resides in one of our three Units: Chicago (CCBA), Milwaukee, or Wisconsin-Upper Michigan (WUMBA), for the purpose of receiving this newsletter. We solicit and receive a disk from Memphis with the names and addresses of those who qualify twice a year when the publication goes to press. Whoever is on that list receives the newsletter and receives it free of charge. It is intended as a "bonus" gift from the District to stimulate interest and offer free "lessons" or "tips" to improve everyone's game. In addition, it offers novice schedules for tournaments in the area to promote attendance and activity among less-experienced (not necessarily new) players. It also includes results from area newcomer events.

In addition to being mailed to "under 300's or non-life masters," we bring the overruns to local tournaments and distribute them there. We have received highly favorable comments and thanks for our efforts from members with both over and under 300 points who have picked up their copy of the newsletter at the tournaments.

We hope that no one has taken offense at receiving this newsletter. That would be contrary to our purpose and render our enormous efforts and expense in bringing it to you unnecessary. I hope this clarifies the situation and you will accept our "gift." in the spirit with which it is intended.

Suzi Subeck, Editor

"Never despair; but if you do, work on in despair."

-Edmund Burke



District 13 Spring Regional

April 21-27, 2003

**Grand Geneva Resort and Spa
Lake Geneva, Wisconsin**

on Route 50, one-half mile east of Route 12

Room Rate \$93 single or double.

Call 262/248-8811 or 800/558-3417 before March 23

Events for Newcomers:

0-5 ACBL members play free all week

Monday, April 21

FREE Stratified 199er Pairs

Tuesday to Friday

Single Session 199er Games at 10:00, 3:00 and 7:30

0-5/20/50/100/200

Saturday at 1:30 and 7:30

0-5/20/50/100/200

Sunday at 11:00: 0-200 Swiss Teams:

2 separate sessions

(more points!) 0-5/20/50/100/200

Red Points for all "IN" Games -- Partners Guaranteed

Special Party and Registration Gift for Newcomers

Chairman: Marilyn Charlson (262) 646-2246

Thinking is important but always remember that bridge is a timed event ...

And it is your responsibility to finish a round on time. Learn to make routine plays quickly and in tempo so that you have time to

News Flash:

Your *I/N Newsletter... especially for you* is online at: <http://pages.prodigy.net/stansubeck/page160.html>. All the past issues are archived there and the present issue is up as well.

In addition, we are going to publish a third issue of the newsletter **online only** in late June. Be sure to check it out. If you want to do less typing, simply access us through the District 13 website at: <http://acbl-district13.org/>



For it isn't enough to talk about peace. One must believe in it. And it isn't enough to believe in it. One must work at it.

--Eleanor Roosevelt

Improving your partnership:

If you have a fit for partner's major, **always** raise it!

When partner overcalls a suit, if you have one, lead it

Assume partner has a minimum until he tells you otherwise. That's 13-15 pts for his opening bid and 6-9 pts. if he's responded to your opening bid.

Use defensive signals to help partner during the play. When discarding a suit, play the highest card you can afford to tell partner you want the suit led. When discarding a suit, play high-low with an even number and low-high with an odd number to give partner the count.

Central States, October, 2002

Monday evening 199er Pairs (12 pairs)

1			Johnnie Faxon, Tulsa OK; Dolores Wehn, Willow Springs IL
2	1		Michael Strong - Johanna Strong, Winfield IL
3	2	1	Patrick Haverty, Woodstock IL; Jack Sanders, Crystal Lake IL
4/5	3/4		Steven Wilson - Thomas Aldrich III, Palatine IL
4/5	3/4		Elizabeth Sibbach, Hoffman Estates IL; George Brandt, Palatine IL
		2	Thomas O'Connell - Karen O'Connell, Chicago IL

299er Pairs (25 pairs)

1			Meera Patel - Dahyabhai Patel, Willow Springs IL
2	1	1	Roberta Levine, Winnetka IL; Muriel Goldberg, Highland Park IL
3	2		Lynn Goldman - Lois Mills, Highland Park IL
4			Ruth Barnes - Oksana Marchuk, Hinsdale IL
5	3	2	Shelly Costello, Barrington IL; Jane McCaffrey, Hoffman Estates IL
	4	3	Linda Rough, Lake Zurich IL; Jeannette Chase, Lake Barrington IL
	5		Deanna Sup, Libertyville IL; Barbara Stone, Ivanhoe IL

Wednesday Morning 299er Pairs (22 pairs)

1			Jeri Poker, Milwaukee WI; Lucy Will, West Allis WI
2	1		Sid Levin, Skokie IL; Michael Lattyak, Westchester IL
3			Karen Golden - Susan Tunelius, Davis IL
4			Carol Herr, Greenfield WI; C Jean Bluemner, Franklin WI
5			Joan Bailey-Murray - Jean Huber, Rockford IL
6	2		Lynn Goldman - Lois Mills, Highland Park IL
	3	1	Genevieve Joyce - Bonnie Goldberg, Racine WI
	4		Carol Fischer, Rockford IL; Jane McCurdy, Davis IL
	5	2	Bonnie Franklin - Paulette Swofford, Highland Park IL
		3	Douglas Stone, Mundelein IL; Barbara Stone, Ivanhoe IL

Wednesday Afternoon 199er Pairs (16 pairs)

1			Carol Herr, Greenfield WI; C Jean Bluemner, Franklin WI
2			Jeri Poker, Milwaukee WI; Lucy Will, West Allis WI
3			James Blocker, Westchester IL; Patricia Reinartz, Milwaukee WI
4			Joan Bailey-Murray - Jean Huber, Rockford IL
5	1	1	Tom Dearing - Lois Hoyer, Geneva IL
2	2		Marylu Brown, Blue Island IL; Barbara Rohrdanz, Kankakee IL
3	3		Edna Barbour, Whitewater WI; Barbara Mattes, Milton WI
	4/5		Karl Dencker - Rajahneen Dencker, Lk In The Hls IL
	4/5		Candace Timson, Hinsdale IL; Carol Thorne, Burrigle IL

Thursday Morning 299er Pairs (22 pairs)

1			Dahyabhai Patel, Willow Springs IL; Dave Srinivasan, Bolingbrook IL
2	1		Jacqueline Rapp, Arlington Hts IL; Maurice Champagne, Mt Prospect IL
3			Thomas Hardy, Huntley IL; Farlin Caufield, Woodstock IL
4	2	1	Helen Gilbert, Loves Park IL; Naida Depew, Rockford IL
5			John Soule, Niles IL; Philip Lapalio Jr, Chicago IL
6	3		Genevieve Joyce - Bonnie Goldberg, Racine WI
	4		Kathy Preziosi, Mt Prospect IL; Fred Blaumueller, Glenview IL
	5		Jane Morrissey - Kathleen Gleason, Hinsdale IL

Thursday Afternoon 299er Pairs (23 pairs)

1	1		Lois Hoyer, Geneva IL; Rebecca Shepherd, Bartlett IL
2			Patricia Reinartz, Milwaukee WI; Michael Lattyak, Westchester IL
3			Carol Herr, Greenfield WI; C Jean Bluemner, Franklin WI
4			John Soule, Niles IL; Philip Lapalio Jr, Chicago IL
5			Chaz Davis - Sicy Davis, Mundelein IL
6			Mary Jo Sergeant, Rockford IL; Dolores Witte, Roscoe IL
	2	1	Ronald Niesing - Judy Niesing, Green Bay WI
	3		Edna Barbour, Whitewater WI; Barbara Mattes, Milton WI
	4		Jacqueline Rapp, Arlington Hts IL; Maurice Champagne, Mt Prospect IL

299er Pairs (6 pairs)

1			Patrick Haverty, Woodstock IL; Karl Dencker, Lk In The Hls IL
---	--	--	---

2 Dahyabhai Patel, Willow Springs IL; Dave Srinivasan, Bolingbrook IL

Friday Morning 299er Pairs (23 pairs)

1 Richard Hevrdejs, Orland Park IL; Ron Blouin, Blue Island IL
2 1 Jane Morrissey - Kathleen Gleason, Hinsdale IL
3 2 Charles Johnson - Demaris Johnson, Aurora IL
4 3 1 Gierahn Sharon L, Franksville WI; Jennifer Musson, Racine WI
5 Dahyabhai Patel, Willow Springs IL; Dave Srinivasan, Bolingbrook IL
6 4 Susan Zellin - Bernard Chulew, Glendale WI
5 Lois Hoyer, Geneva IL; Rebecca Shepherd, Bartlett IL
2 Genevieve Joyce - Bonnie Goldberg, Racine WI

Friday Afternoon 299er Pairs (25 pairs)

1 Dahyabhai Patel, Willow Springs IL; Dave Srinivasan, Bolingbrook IL
2 Rick Lepscier, Tinley Park IL; George Goewey, Chicago IL
3 1 Charles Johnson - Demaris Johnson, Aurora IL
4 2 Roger Resek, Milwaukee WI; Ron Ramaker, Brown Deer WI
5 3 1 Tom Dearing - Lois Hoyer, Geneva IL
6 Gary Joyce, Lawrence KS; Mary Phillips, Shawnee Msn KS
4 2 Genevieve Joyce - Bonnie Goldberg, Racine WI
5 3 Patrick Haverty, Woodstock IL; Karl Dencker, Lk In The Hls IL
4 Mary Craig - Joyce Burzinski, La Crosse WI

Saturday Afternoon Stratified 299er Pairs (16 pairs)

1 1 Rudolph Brunty - Lawrence Thomas, Arlington Hts IL
2 2 1 Steven Wilson - Thomas Aldrich III, Palatine IL
3 3 2 Dee Dee Gooze, Arlington Hgts IL; Marilyn Karim,
4 4 3 Jimmie Norris - La Vern Couch, Iowa City IA
5 5 4 Charles Johnson - Demaris Johnson, Aurora IL

Saturday Afternoon 50/20 Pairs (17 pairs)

1 Ronald Kohn - Jo Kohn, Schaumburg IL
2 Thomas Shepro, Fitchburg WI; Mary Shepro, Madison WI
3 Benjamin Whitcomb, Ft Atkinson WI; Pamela Whitcomb, Fort Atkinson WI
4 1 Anna Rindfleisch - Judy Hlavka, Racine WI
5 Zoe Baxter Buchanan - Jean Adcock, Naperville IL
2 Gierahn Sharon L, Franksville WI; Jennifer Musson, Racine WI

Saturday Evening 299er Pairs (22 pairs)

1/2 1/2 Steven Wilson - Thomas Aldrich III, Palatine IL
1/2 1/2 Marilyn Karim, Glen Ellyn IL; Audrey Gehrig, Janesville WI
3 Rudolph Brunty - Lawrence Thomas, Arlington Hts IL
4 Chaz Davis - Sicy Davis, Mundelein IL
5 Stephen Olson - Kathleen Midkiff, Temple TX
6 3 1 Joyce Burzinski - Mary Craig, La Crosse WI
4 2 Barbara Morgan, Park Ridge IL; Fred Johnston, Chicago IL
5 Michael Strong - Johanna Strong, Winfield IL
3 Karl Dencker - Rajahneen Dencker, Lk In The Hls IL
4 Thomas Shepro, Fitchburg WI; Mary Shepro, Madison WI

Sunday Morning 199er Swiss Teams (17 teams)

1 1 Audrey Gehrig, Jacqueline Rapp - Karen Vetter - Lois Waskowski
2 Candace Timson - Oksana Marchuk - Alice Mansell - Ruth Barnes
3 Joan Bailey-Murray, Laurie Hamachek - Rachel Campbell, Chere Morrison
4 2 1 Thomas Didelot - Amy Utter - Douglas Utter - Jay Eggener
5 3 Patrick Haverty - Ruth Sprouse, Peter Mugavero - Jack Sanders
4 Michael Strong - Johanna Strong, Edna Barbour, Barbara Morgan

Sunday Afternoon 199er Swiss Teams (17 teams)

1 Candace Timson - Oksana Marchuk - Alice Mansell - Ruth Barnes
2 1 Barbara Harris, Irma Petersen, ; Barbara Bebee - Katy Gross
3 Judi Singer - Gail Goldstein, Judy Filler, Roberta Levine
4/6 3/4 1/2 Patrick Haverty - Ruth Sprouse, Peter Mugavero - Jack Sanders
4/6 3/4 1/2 Thomas Didelot - Amy Utter - Douglas Utter - Jay Eggener
4/6 Deborah Zelinsky, Adrienne Kamp, Babette Brenner, Judy Cohen

Wisconsin Holiday Regional (December, 2002)

Thursday Afternoon 199er Pairs (16 pairs)

1 Carol Herr, Greenfield WI; C Jean Bluemner, Franklin WI
2 1 1 Christine Weiler - Arlene Vuturo, Libertyville IL
3 2 Michael Strong - Johanna Strong, Winfield IL
4 3 2 Jonathan Zimble, Winnetka IL; Shgo Yun-Guo, Willmette Illinois
5 Patricia Reinartz - Louise Malmstadt, Milwaukee WI
6 4/6 3/5 Steve Wilson, Crystal Lake IL; Tom Willson, Champaign IL
4/6 3/5 Maripat Shaw - Patricia Kornfeld, Shorewood WI

**Memorial Day Sectional
Grand Geneva Resort & Spa, Lake
Geneva**

*On Route 50, one-half mile east of Route 12.
Call 262-248-8811 or 800-558-3417
for reservations*

Friday, May 23

7:30 p.m. **0-199 Stratified Pairs**
Stratified Open Pairs

Saturday, May 24

9:00 a.m. Bracketed KO Teams I -
3 sessions

0-199 Stratified Pairs

Stratified Open Pairs
1:30 p.m. Bracketed KO Teams I

0-199 Stratified Pairs

Stratified Open Pairs
7:30 p.m. Bracketed KO Teams I

0-199 Stratified Pairs

Stratified Open Pairs

Sunday, May 25

9:00 a.m. Bracketed KO Teams II -
3 sessions

0-99 Stratified Pairs

Stratified Open Pairs
1:30 p.m. Bracketed KO Teams II

0-199 Stratified Pairs

Stratified Open Pairs
7:30 p.m. Bracketed KO Teams II

0-199 Stratified Pairs

Stratified Open Pairs

Monday, May 26

11:00 a.m. Stratified Swiss Teams

Marilyn Charlson: 262-646-2246

Email: MMacbob@aol.com

Tom Sucher 630-894-4048

Email: tsucher@juno.com

Stratified Games:

A: 1500+; B: 500-1500; C: 0-500

199er Games: 5/20/50/100/200



*A little simplification
would be the first step
toward rational living, I
think.*

--Eleanor Roosevelt

**Always cover an honor
with an honor!**

Second hand low!

Third hand high!

**Aces are made to take
kings!**

*"McDonald's
announced plans to get
their customers back.
From now on, they're
only going to serve fresh
food and have clean
restrooms. So what
were they thinking
before?"*

-Jay Leno



As soon as they can count
to 13, it is time to teach
your children to play cards.

	4/6	3/5	Ron Hopman - Caralee Hopman, Huntley IL
Thursday Morning 199er Pairs (10 pairs)			
1			Patricia Reinartz - Louise Malmstadt, Milwaukee WI
2	1	1	Jay Eggener - Thomas Didelot, Hartford WI
3	2	2	Jonathan Zimble, Winnetka IL; Shgo Yun-Guo, Willmette IL
4			Carol Herr, Greenfield WI; C Jean Bluemner, Franklin WI
	3		Donald Mason, Woodridge IL; Timothy O'Reilly, Naperville IL
Friday Morning 199er Pairs (22 pairs)			
1	1		Leslie Flaherty - Jim Hacker, Minneapolis MN
2	2	1	Thomas Didelot - Jay Eggener, Hartford WI
3	3		Michael Strong - Johanna Strong, Winfield IL
4			Gunilla Flater, Highland Park IL; Jim Peterson, Lincolnshire IL
5	4	2	Maripat Shaw - Patricia Kornfeld, Shorewood WI
6	5		Patrick Haverty, Woodstock IL; Karl Dencker, Lk In The Hls IL
		3	Christine Weiler - Arlene Vuturo, Libertyville IL
Friday Afternoon Stratified 199er Pairs (17 pairs)			
1	1		Jay Eggener - Thomas Didelot, Hartford WI
2	2		Michael Strong - Johanna Strong, Winfield IL
3	3	1	Steve Spitzer - Dennis Price, Burlington WI
4	4		Ryan Daniels, Vernon Hills IL; Mark Maxwell, Moon Twp PA
5	5	2	Douglas Bockstiegel, Colgate WI; Jonathan Zimble, Winnetka IL
Saturday Morning 199er Pairs (20 pairs)			
1/2			Richard Claus, Wheaton IL; Richard Murdock, Warrenville IL
1/2	1		Michael Strong - Johanna Strong, Winfield IL
3	2	1	Mary Ellis - Robert Ellis, Lake Barrington IL
4	3		Jim Hacker - Leslie Flaherty, Minneapolis MN
5	4	2	Karl Dencker - Rajahneen Dencker, Lk In The Hls IL
6			Daniel Wiemerslage, Gurnee IL; Hal Sloan, Round Lake Park IL
	5	3	Genevieve Joyce - Bonnie Goldberg, Racine WI
		4	Douglas Bockstiegel, Colgate WI; Jonathan Zimble, Winnetka IL
Saturday Afternoon 199er Pairs (24 pairs)			
1			D Scofield, Skokie IL; Kerry Flom, Palatine IL
2	1		John Pruitt, Naperville IL; Keith Farral, Lisle IL
3	2	1	Douglas Utter - Thomas Didelot, Hartford WI
4/5	3/4		Carolyn Damon - Burton Lewis, Chicago IL
4/5	3/4	2	Nancy Bruick - John Bruick, Libertyville IL
6	5	3	Jonathan Zimble, Winnetka IL; Douglas Bockstiegel, Colgate WI
		4	Karl Dencker - Rajahneen Dencker, Lk In The Hls IL
		5	Thomas O'Connell - Karen O'Connell, Chicago IL
Sunday Afternoon 199er Pairs (20 pairs)			
1			Jeffrey Wefer, Naperville IL; Barry Erlich, Glen Ellyn IL
2			Stewart Skolnick, Chicago IL; Donald Cherney, Skokie IL
3			Jonathan Zimble, Winnetka IL; A Kevorkian, Barrington IL
4	1	1	Rachel Campbell - Laurie Hamachek, Elgin IL
5	2		Paul Primeau - Mary Primeau, Hinsdale IL
6	3		Maxine Cohn - Ronald Cohn, Glendale WI
	4		Judy Wagner, Waukesha WI; Susan Radichel, Hartland WI
	5	2	Jack Sanders, Crystal Lake IL; Ruth Sprouse, Woodstock IL
		3	Benjamin Whitcomb, Ft Atkinson WI; Pamela Whitcomb, Fort Atkinson WI
		4	Thomas O'Connell - Karen O'Connell, Chicago IL
Sunday Morning 199er Pairs (24 pairs)			
1	1	1	Thomas Shepro, Fitchburg WI; Mary Shepro, Madison WI
2	2	2	Anna Rindfleisch - Judie Hlavka, Racine WI
3			Barry Erlich, Glen Ellyn IL; Jeffrey Wefer, Naperville IL
4	3		Jim Hacker - Leslie Flaherty, Minneapolis MN
5	4		Susan Radichel, Hartland WI; Judy Wagner, Waukesha WI
6	5		Patrick Haverty - Ruth Sprouse, Woodstock IL
		3	Steve Spitzer - Dennis Price, Burlington WI
		4	Rachel Campbell - Laurie Hamachek, Elgin IL
Monday First 199er Swiss Teams (10 teams)			
1	1		Mary Lou Findley - Susan Radichel, Hartland WI; Judy Wagner - Bill Heimlich, Waukesha WI
2	2	1	Barbara Stone, Ivanhoe IL; Douglas Stone, Mundelein IL; Nancy Bruick - John Bruick
3	3		Walter Karbonik, Palantine IL; Joan Karbonik, Palatine IL; Vi Grisham, Algonquin IL; Jo Kohn
4/5			Karl Dencker - Rajahneen Dencker, Lk In The Hls, Patrick Haverty, Woodstock, Jack Sanders,
4/5			Richard Edholm - Sue Edholm - Patricia Sharp, Libertyville IL; Louis Sharp, Liberville IL
Monday Second 199er Swiss Teams (10 teams)			
1	1		Karl Dencker - Rajahneen Dencker, Patrick Haverty, Woodstock IL; Jack Sanders, Crystal Lake

Upcoming Tournaments

Kenosha Sectional, March 21-23, Kenosha
 Springtime Sectional, April 4-6, Appleton
 District 13 Sprint Regional, April 21-27, Lake Geneva
 Green Bay Sectional, May 2-4, Green Bay
 299er Sectional, May 3-4, Northbrook
 Haywood-Minong Sectional, May 16-18, Haywood
 Minoqua-Lakeland Sectional, June 4-8, Minoqua
 Rockford Regional, June 16-22, Rockford
 Midsummer Madness, July 7-13, Rosemont
 Green Bay Regional, August 11-14, Green Bay

2	2	Mary Lou Findley - Susan Radichel, Hartland WI; Judy Wagner - Bill Heimlich, Waukesha WI
3		Joan Bailey-Murray - R Kerwin, Rockford IL; Rachel Campbell - Laurie Hamachek, Elgin IL
4	3	Michael Strong - Johanna Strong, Winfield IL; Jim Hacker - Leslie Flaherty, Minneapolis MN
	1	Walter Karbonik, Palatine IL; Joan Karbonik, Palatine IL; Vi Grisham, Algonquin IL; Jo Kohn, Schaumburg IL

Winterfest Sectional, January, 2003

Friday Morning Stratified 99er Pairs (19 pairs)

1		Maurice Champagne, Mt Prospect IL; Joe Durlak, Evanston IL
2	1	Frances Leavitt, Lincolnwood IL; Mary Cieslik, Park Ridge IL
3	2	Jean Adecock - Zoe Baxter Buchanan, Naperville IL
4	3	Jay Wisenauer - James Wong, Wheaton IL
5	4	1 Jeannette Chase, Lake Barrington IL; Jane McCaffrey, Hoffman Estates IL
6		Suzanne Zipkoff, Deerfield IL; Lesley Anixter, Highland Park IL
	2	Bradley Shaps - Gail Shaps, Northbrook IL

Friday Evening Stratified 99er Pairs (22 pairs)

1		George Brandt, Palatine IL; Elizabeth Sibbach, Hoffman Estates IL
2		Joe Durlak, Evanston IL; Maurice Champagne, Mt Prospect IL
3	1	1 Bradley Shaps - Gail Shaps, Northbrook IL
4	2	Rashida Loya, Naperville IL; Jack Eilrich, River Forest IL
5	3	Rachel Campbell - Laurie Hamachek, Elgin IL
6		Ryan Daniels - Jennifer Daniels, Vernon Hills IL
	4/5	Steve Oshen - Julie Oshen, Glen Ellyn IL
	4/5	Robert Kucaba, Downers Grove IL; Stephen Bell, Warrenville IL
		2 Bill Grisham - Vi Grisham, Algonquin IL
		3 Amy Richardson - Chris Hancock, Downers Grove IL
	4	Craig Wakefield - Carolyn McDonald, Des Plaines IL

Stratified 99er Pairs (35 pairs)

1		Ryan Daniels - Jennifer Daniels, Vernon Hills IL
2		Charles Johnson - Demaris Johnson, Aurora IL
3	1	Ronald Kohn - Jo Kohn, Schaumburg IL
4	2	Frances Leavitt, Lincolnwood IL; Mary Cieslik, Park Ridge IL
5	3	1 Sid Bennett - Elizabeth Subkowsky, Chicago IL
6	4	2 Carolyn Stoner - Robert Subkowsky, Chicago IL
	5	Laurie Hamachek - Rachel Campbell, Elgin IL
	6	3 Celeste Jacklin - Ann Witt, Aurora IL
		4 Rick Lightburn, Deerfield IL; Tom Campbell, Chicago Illinois
		5 Mary Payne - Cyndi Murphy, Naperville IL

Stratified 99er Pairs (20 pairs)

1		Steven Wilson - Thomas Aldrich III, Palatine IL
2	1	William Artz - Colette Novich, Chicago IL
3	2	1 Suzann Patterson - Nance Booty, Naperville IL
4	3	2 Lynne Marley, Downers Grove IL; Tony Guercio, Donners Grove IL
5		Judy D'Isa, La Grange Park IL; Betsy Hoyd, Brookfield IL
6		Mary Southwick, Lisle IL; Timothy O'Reilly, Naperville IL
	4	Carola Klapper, Highwood IL; Sandra Kite, Glenview IL

On Defense:

Count cards and points as you play. Remember the auction and consider your opponents' actions when you choose your opening lead, and plan the defense. Come up with a mental picture of declarer's hand based on the auction. This, in combination with dummy and your hand will give you a clear idea of what partner holds in his hand.

Think ahead and be ready to make critical plays. Hesitations can impart too much information about your hand to declarer.

When in doubt, lead the fourth-best card in your longest suit. Leading from length is the "standard" lead against a notrump contract, and it's often the safest lead against a suit contract, too. It is often the best way to cut down declarer's trump length and set up your suit.